

Wilke Angled Blunt Nose Scissors

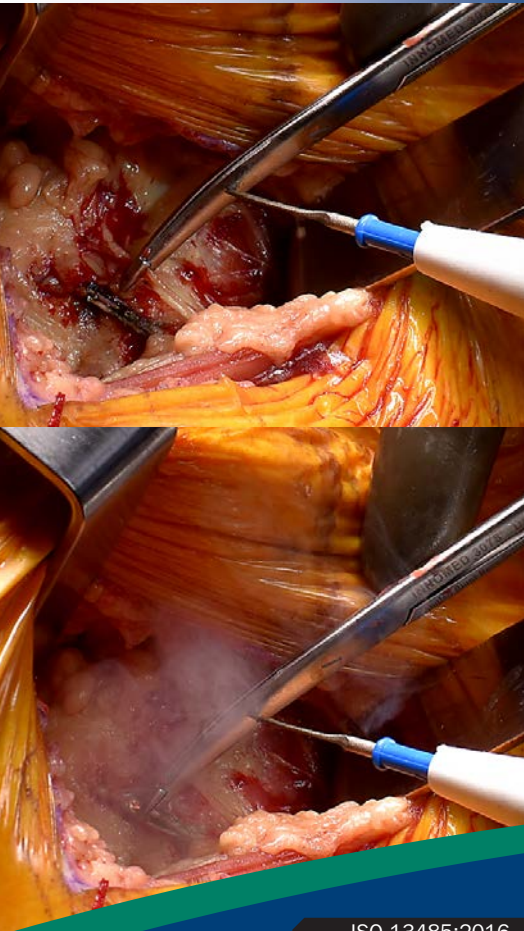
Designed by Benjamin K. Wilke, MD

Allows blunt dissecting around critical structures (nerves, vessels, etc.) while maintaining a cutting surface for fascia. The tool's blunt ends can also be used for cauterizing and grabbing small vessels.



PRODUCT NO:
3078
Overall Length: 6" (15,2 cm)

MADE EXCLUSIVELY
FOR INNOMED IN
GERMANY



ISO 13485:2016

FREE TRIAL ON MOST INSTRUMENTS

INNOMED



103 Estus Drive, Savannah, GA 31404
www.innomed.net info@innomed.net

912.236.0000 Phone
912.236.7766 Fax

Innomed-Europe Tel. +41 41 740 67 74
Fax +41 41 740 67 71

1.800.548.2362