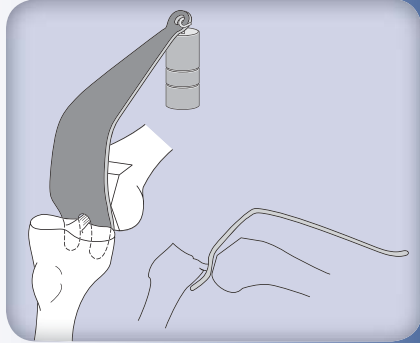


Wide PCL Retractor

Designed by S. David Stulberg, MD

Helps expose the proximal tibia for better surface access

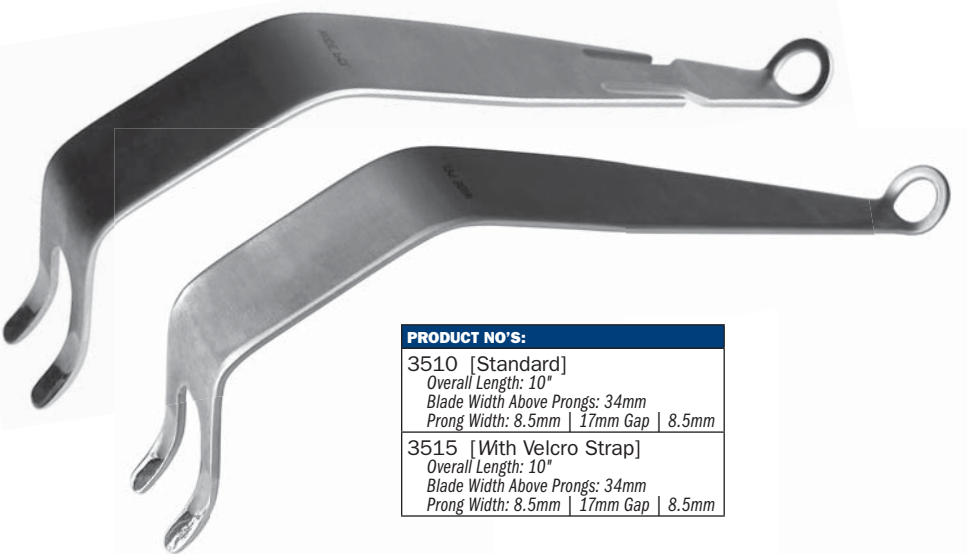
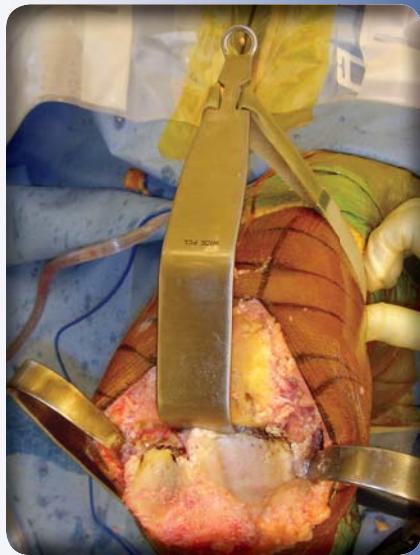
Designed to expose the proximal tibia during total knee surgery for better access to the articulating surfaces. The handle is contoured to allow the surgeon a clear field of view of the operating area. Modular weights can be used to help hold the retractor in place.



PRODUCT NO:	
3520 [Standard]	Overall Length: 10"
	Blade Width Above Prongs: 57mm
	Prong Width: 8.5mm 17mm Gap 8.5mm
3525 [With Velcro Strap]	Overall Length: 10"
	Blade Width Above Prongs: 57mm
	Prong Width: 8.5mm 17mm Gap 8.5mm

MIS Modified Wide PCL Retractor

Designed by S. David Stulberg, MD



PRODUCT NO'S:	
3510 [Standard]	Overall Length: 10"
	Blade Width Above Prongs: 34mm
	Prong Width: 8.5mm 17mm Gap 8.5mm
3515 [With Velcro Strap]	Overall Length: 10"
	Blade Width Above Prongs: 34mm
	Prong Width: 8.5mm 17mm Gap 8.5mm

FREE TRIAL ON MOST INSTRUMENTS



103 Estus Drive, Savannah, GA 31404
www.innomed.net info@innomed.net

912.236.0000 Phone
912.236.7766 Fax



INNOMED

1.800.548.2362