

Star Metal Cup Liner Removal Impactor

Designed by Andrew M. Star, MD

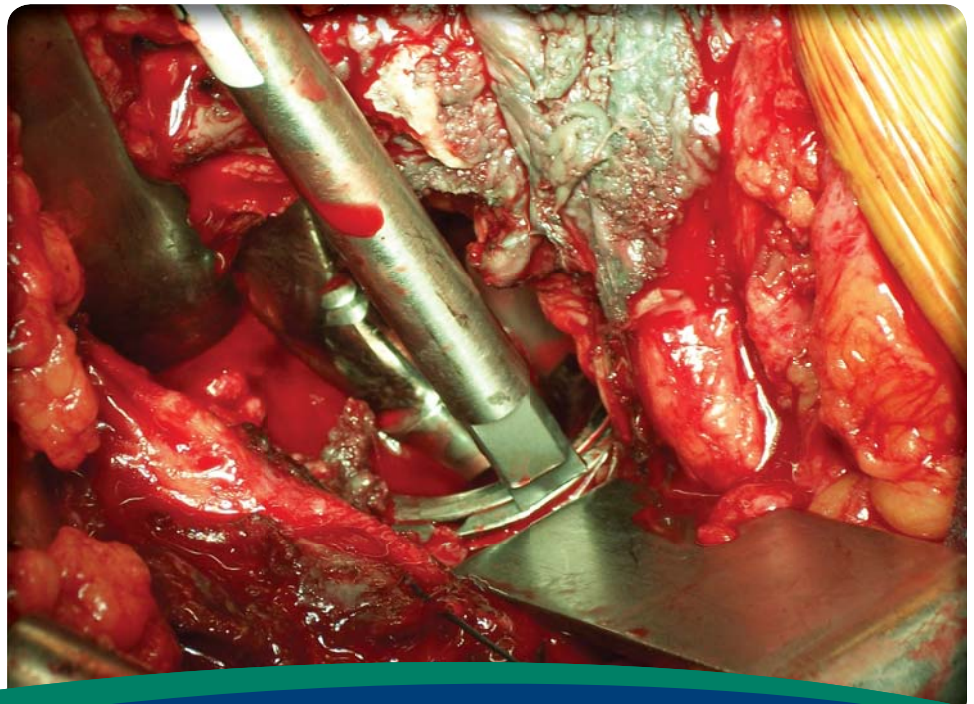
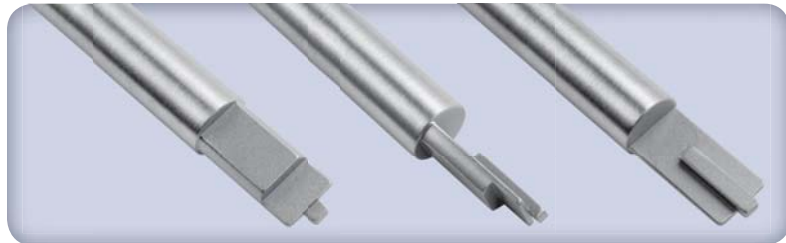
Designed to engage the rim of a metal cup to help with removal of the metal liner

The impactor is placed on the edge of the cup with the tip in the dimple in the cup rim (facing inward.) The impactor should contact the shell and not the liner. Tap sharply several times, then move the impactor to another location at least 90 degrees away from the first and repeat tapping sharply several times. Vibration from tapping the edge of the shell helps cause the liner to become disengaged for removal.



PRODUCT NO:
5014
Overall Length: 8"

**PROUDLY
MADE
IN THE USA**



ISO 9001:2008 • ISO 13485:2003

FREE TRIAL ON MOST INSTRUMENTS

Scan to
Launch Our
Website



103 Estus Drive, Savannah, GA 31404
www.innomed.net info@innomed.net

912.236.0000 Phone
912.236.7766 Fax

Innomed-Europe Tel. +41 41 740 67 74
Fax +41 41 740 67 71

INNOMED

1.800.548.2362