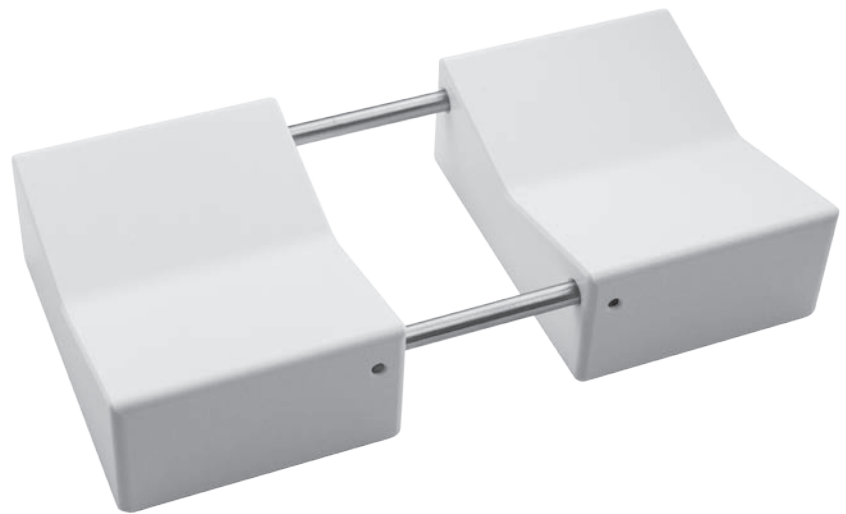


Sanders Tube Holder

Designed by Richard Sanders, MD

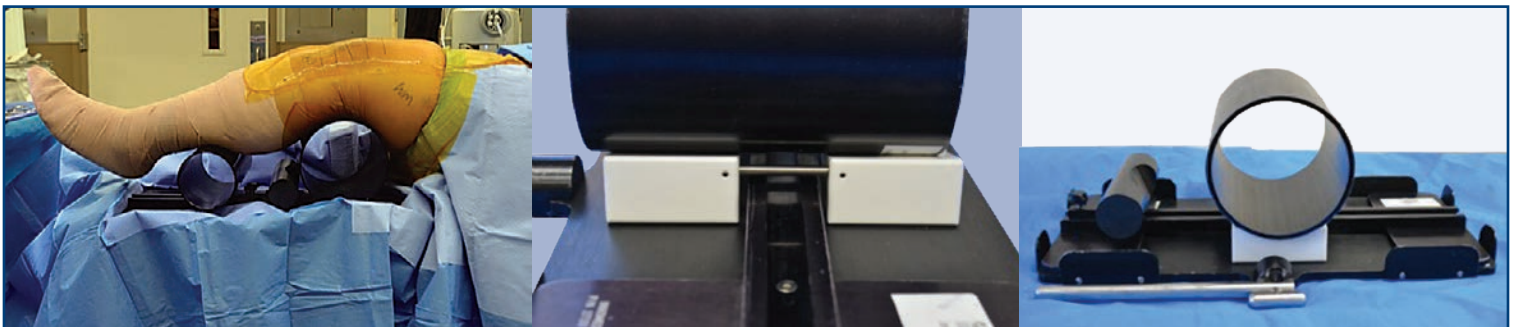
Designed to help stabilize the Sanders Extremity Positioning Tubes (#2740-01 & -02)

The tube holder will help stabilize the tubes when used for lower extremity positioning for lower extremity surgery. Also, by using the tubes with the Stulberg Sliding Bolster (#2730), the knee can be placed in less flexion during the initial incision and wound closure.



PRODUCT NO:
2740-03

**PROUDLY
MADE IN THE
USA**



When used with the Stulberg Sliding Bolster (#2730), the Tube Holder is designed to prevent rolling and side-to-side tipping on the center rail of the Bolster. It can be placed anywhere along the rail of the Bolster, so that tubes can support the ankle and knee simultaneously.

Sanders Extremity Positioning Tubes

Designed by Richard A. Sanders, MD

Designed to support the knee and ankle during lower extremity surgery



PRODUCT NO'S:

2740-01 [Small]
Diameter: 4" (10,2 cm)
Width: 8" (20,3 cm)

2740-02 [Large]
Diameter: 6" (15,2 cm)
Width: 8" (20,3 cm)

**PROUDLY
MADE IN THE
USA**

Stulberg Sliding Bolster

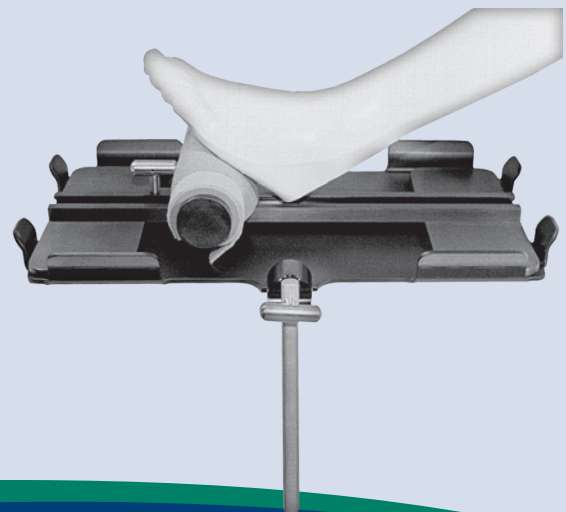
Designed by S. David Stulberg, MD

Helps eliminate the need for a sand bag during total knee surgery

PRODUCT NO'S:

2730
Base Dimensions:
20" x 10.5" (50,8 cm x 26,7 cm)

**PROUDLY
MADE IN THE
USA**



ISO 9001:2008 • ISO 13485:2003

FREE TRIAL ON MOST INSTRUMENTS

Scan to
Launch Our
Website



INNOMED 



103 Estus Drive, Savannah, GA 31404
www.innomed.net info@innomed.net

912.236.0000 Phone
912.236.7766 Fax

Innomed-Europe Tel. +41 41 740 67 74
Fax +41 41 740 67 71

1.800.548.2362