

Rivero Anti-Rotation Corkscrew Femoral Head Remover Set

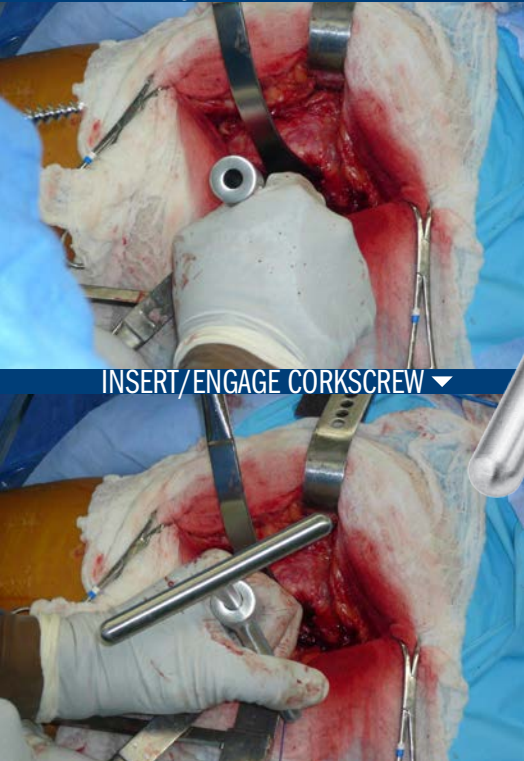
Designed by Dennis Rivero, MD

Designed to help prevent rotation while engaging a femoral head for removal

The sharp-toothed sleeve can be tapped in to help provide purchase of the femoral head, then held to help prevent rotation as the super-threaded corkscrew is turned to engage the head for removal.



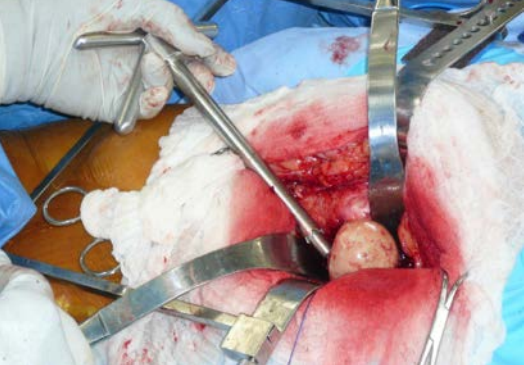
STABILIZE HEAD ▼



INSERT/ENGAGE CORKSCREW ▼



REMOVE HEAD ▼



PRODUCT NO'S:

3705 [Corkscrew & Sleeve Set]
Overall Length: 10" (25,4 cm)

Individual Instruments:

3705-01 [Corkscrew Only]
Overall Length: 10" (25,4 cm)

3705-02 [Sleeve Only]
Overall Length: 8" (20,3 cm)

**PROUDLY
MADE
IN THE
USA**

ISO 9001:2008 • ISO 13485:2003

FREE TRIAL ON MOST INSTRUMENTS

Scan to
Launch Our
Website



103 Estus Drive, Savannah, GA 31404
www.innomed.net info@innomed.net

912.236.0000 Phone
912.236.7766 Fax

Innomed-Europe Tel. +41 41 740 67 74
Fax +41 41 740 67 71

INNOMED 

1.800.548.2362