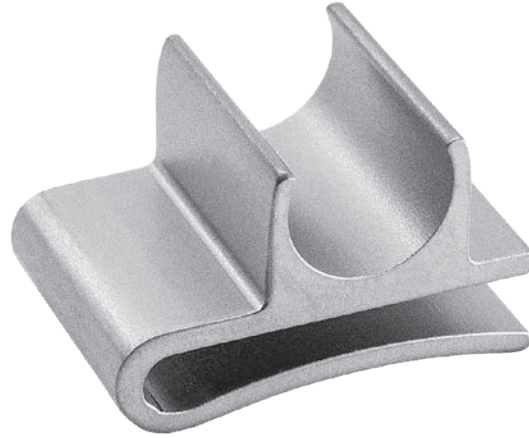


Retractor Clip for Smoke Evacuation Tube

Designed by James Saucedo, MD

Repositionable stainless steel fastener designed to clip onto a retractor to help control the location of a smoke evacuation tube

Allows for use on a 1/8" thick material with allowance for a "spring" fit.



PRODUCT NO:
5466
Dimensions: 27 mm Long
18 mm Wide
16 mm Deep



ISO 13485:2016

FREE TRIAL ON MOST INSTRUMENTS



103 Estus Drive, Savannah, GA 31404
www.innomed.net info@innomed.net

912.236.0000 Phone
912.236.7766 Fax

Innomed-Europe

Tel. +41 41 740 67 74
Fax +41 41 740 67 71

1.800.548.2362

INNOMED