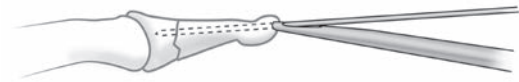


# Resnick Small Bone Tamp with Oblique K-Wire Hole



Designed by Charles Resnick, MD

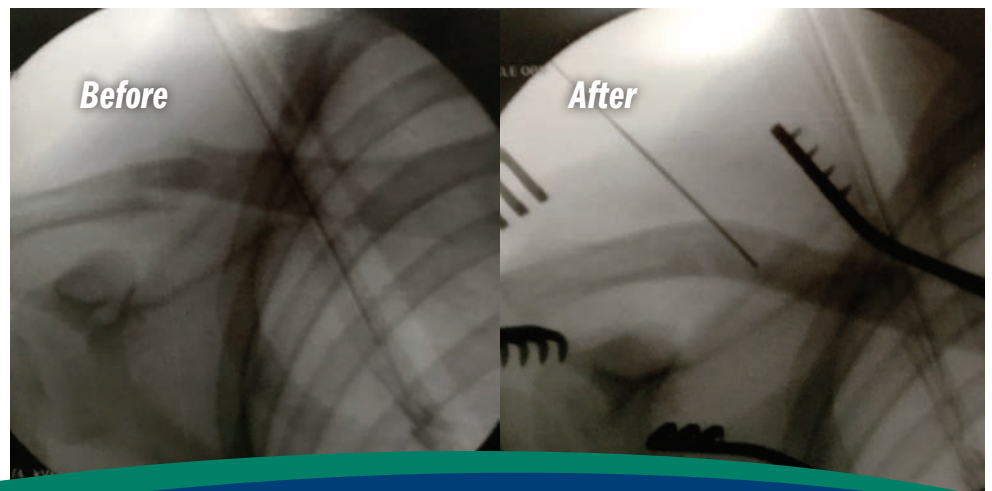
*Design allows for the concurrent reduction of a fracture and placement of a wire into the fracture site – especially helpful when the surgical exposure is small and tight, the fracture fragments are small, and the reduction is demanding*

PRODUCT NO'S:	
5294 [1.1 mm Hole]	Wire Hole for: 1.1 mm (.045") K-wire Overall Length: 7.5" (19.1 cm) Shaft Diameter: 6.3 mm End Diameter: 2.5 mm
5294-01 [1.6 mm Hole]	Wire Hole for: 1.6 mm (.062") K-wire Overall Length: 7.5" (19.1 cm) Shaft Diameter: 6.3 mm End Diameter: 2.5 mm



**TWO SIZES AVAILABLE:**  
Wire Hole for K-wires up to 1.1 mm (.045") or 1.6 mm (.062")

- ▶ The serrated distal end minimizes slippage on the cortical surface, does not interfere with the placement of the guidewire and allows for subsequent surgeon-decided, intraoperative angulation of the wiring once the first cortex is drilled
- ▶ Especially useful in fractures where there is involvement of an articular surface, for example, mallet fractures of the distal phalanx, articular fractures that involve ligamentous attachments or tendon attachments of the phalanges, scaphoid pole small fracture fragments or other small carpal fractures, and radial styloid fractures



ISO 13485:2016

FREE TRIAL ON MOST INSTRUMENTS

Scan to  
Launch Our  
Website



**INNOMED** 



103 Estus Drive, Savannah, GA 31404  
www.innomed.net info@innomed.net

912.236.0000 Phone  
912.236.7766 Fax

Innomed-Europe Tel. +41 41 740 67 74  
Fax +41 41 740 67 71

1.800.548.2362