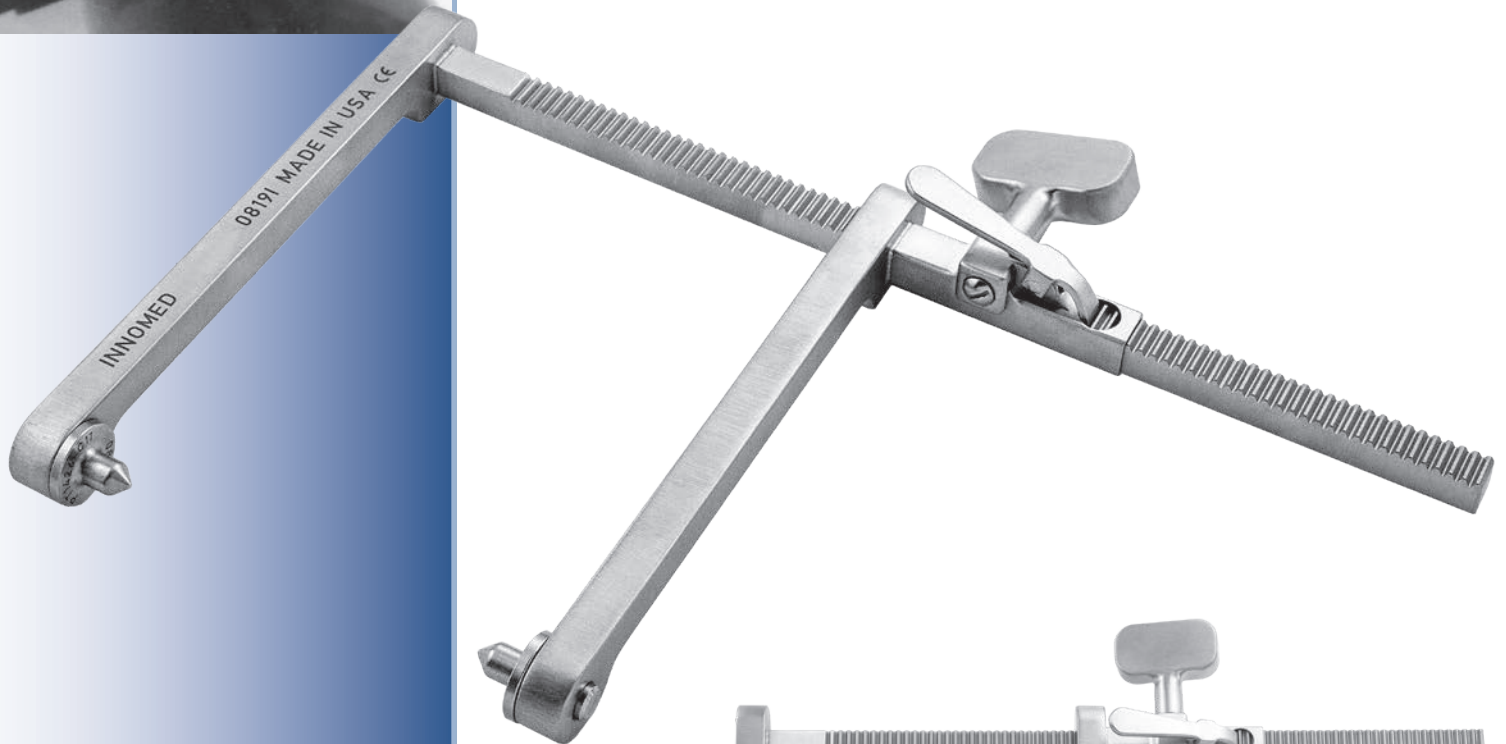
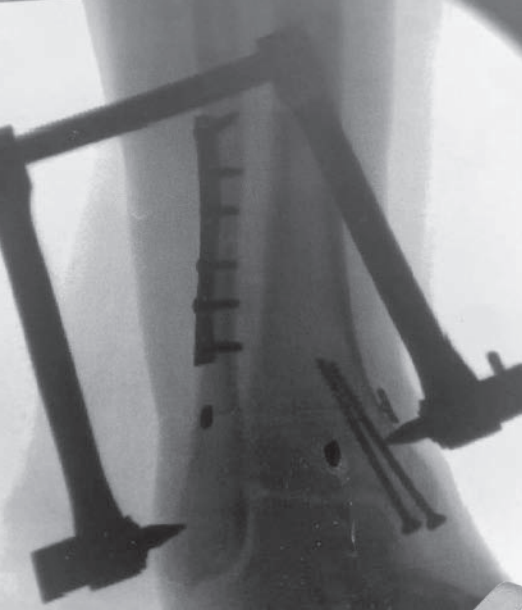


Ratcheting Reduction Clamp Assembly

Designed by Michael Craig, OPA-C

Designed as a soft tissue sparing fracture reduction clamp

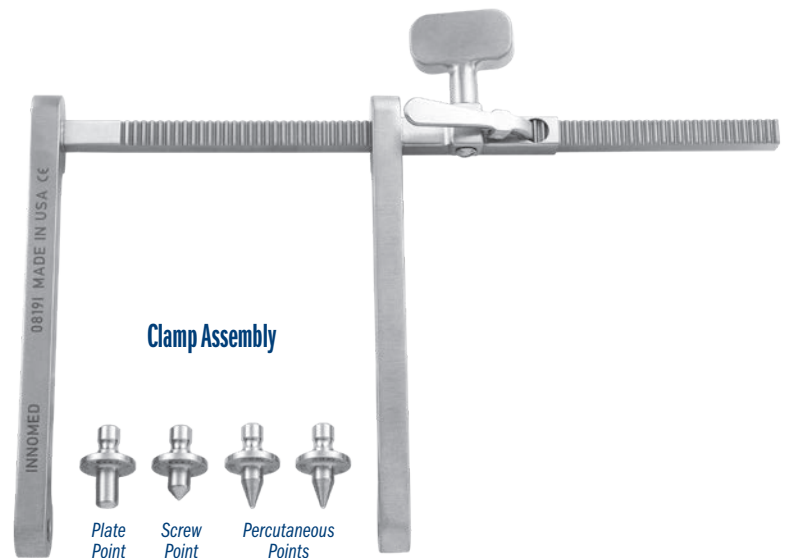
- ▶ High torque can help provide bone and joint reduction without squeezing surrounding tissues
- ▶ Swivel points are placed on the bone, plate, or screw and the ratcheting dial is turned to the desired torque, allowing hands free operation
- ▶ Swivel point design allows the clamp to be easily moved from x-ray view without losing reduction
- ▶ Screw Point fits into a screw head
- ▶ Plate Point fits into a 3.5 mm plate hole



Assembly includes:

(1) Ratcheting Reduction Stationary Arm, (1) Ratcheting Reduction Mobile Arm with Ratchet Knob (1) Plate Point, (1) Screw Point, and (2) Percutaneous Points

PRODUCT NO'S:
3840-00 [Complete Assembly]
Also available Individually:
3840-02 [Plate Point] Overall Length: 1" (2,54 cm)
3840-03 [Screw Point] Overall Length: .875" (2,2 cm)
3840-04 [Percutaneous Point] 2 included in set, one with this product number Overall Length: 1" (2,54 cm)
3840-MA [Ratcheting Reduction Mobile Arm with Ratchet Knob] Overall Length: 6.5" (16,5 cm)
3840-SA [Ratcheting Reduction Stationary Arm] Overall Length: 10.5" (26,7 cm) Width: 9" (22,9 cm) Height: 6" (15,2 cm)



ISO 13485:2016

FREE TRIAL ON MOST INSTRUMENTS

INNOMED



103 Estus Drive, Savannah, GA 31404
www.innomed.net info@innomed.net

912.236.0000 Phone
912.236.7766 Fax

Innomed-Europe Tel. +41 41 740 67 74
Fax +41 41 740 67 71

1.800.548.2362

© 2022 Innomed, Inc.