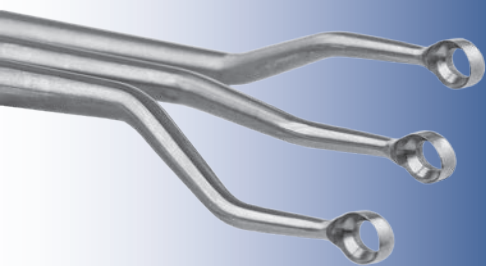


Powers Double Bent Curette Set

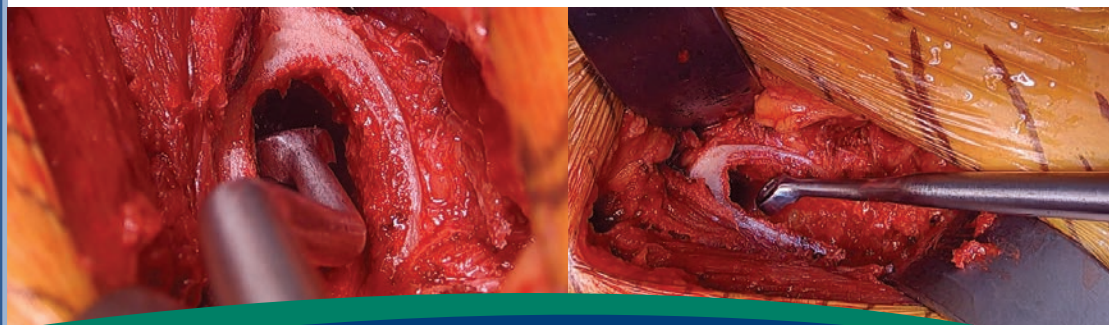
Designed by Mark Powers, MD

The bayonet curettes help allow for proper lateralization and seating of the broach



PRODUCT NO'S:	
5190-00 [Set of Three]	
Also available individually:	
5190-L [Angled Left]	5190-R [Angled Right]
Overall Length: 16.875" (42,9 cm)	Overall Length: 16.875" (42,9 cm)
Handle Length: 9" (22,9 cm)	Handle Length: 9" (22,9 cm)
Shaft Length Before Bend: 5.25" (13,3 cm)	Shaft Length Before Bend: 5.25" (13,3 cm)
Bend Offset: .5" (1,3 cm)	Bend Offset: .5" (1,3 cm)
Curette Cup Angle: 33°	Curette Cup Angle: 33°
Curette Cup Inner Dimensions: 6 x 8,7 mm	Curette Cup Inner Dimensions: 6 x 8,7 mm

5190-S [Straight]
Overall Length: 17" (43,2 cm)
Handle Length: 9" (22,9 cm)
Shaft Length Before Bend: 5.25" (13,3 cm)
Bend Offset: .5" (1,3 cm)
Curette Cup Angle: 33°
Curette Cup Inner Dimensions: 6 x 8,7 mm



www.innomed.net

FREE TRIAL ON MOST INSTRUMENTS

INNOMED 

ISO 13485:2016



103 Estus Drive, Savannah, GA 31404
info@innomed.net

912.236.0000 Phone
912.236.7766 Fax

Innomed-Europe Tel. +41 41 740 67 74
info@innomed-europe.com

1.800.548.2362