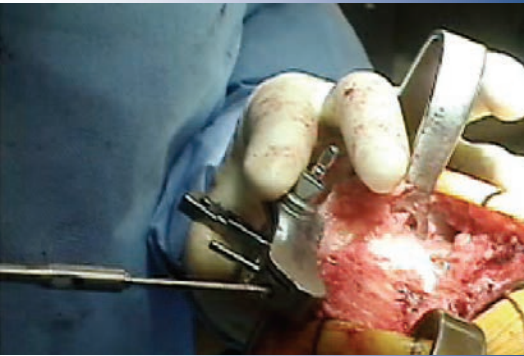


# Pin Driver and Threaded Bone Pins



Quick-connect version for use with a driver.

PRODUCT NO'S:
1205 [Pin Driver] Overall Length: 3.75" (9,5 cm) For Pin Diameters: 1/8" (.125") (3,2 mm)
1206 [Pin Driver w/Zimmer Hall Quick-connect] Overall Length: 5" (12,7 cm) For Pin Diameters: 1/8" (.125") (3,2 mm)
<b>1/8" (3.2mm) Pins – Packages of 10:</b>
1287 [85 mm Threaded Bone Pin]
1290 [65 mm Threaded Bone Pin]
1297 [55 mm Threaded Bone Pin with Collar]
8248 [Fixed Driver with Zimmer Hall Quick-connect] Overall Length: 5.75" (15,6 cm) Handle Width: 4.625" (11,6 cm)



Fixed Driver with Zimmer Hall Quick-connect

# Shouldered Bone Pins



PRODUCT NO'S:
<b>Packages of 10:</b>
1270 [70mm with Trochar Point] Diameter: 3.2 mm (1/8") (.125") Overall Length: 70 mm Shoulder-to-tip: 45 mm
1271 [70mm with Trochar Point] Diameter: 1.6 mm (1/16") (.062") Overall Length: 70 mm Shoulder-to-tip: 45 mm

[www.innomed.net](http://www.innomed.net)

FREE TRIAL ON MOST INSTRUMENTS

**INNOMED** 

ISO 13485:2016



103 Estus Drive, Savannah, GA 31404  
info@innomed.net

912.236.0000 Phone  
912.236.7766 Fax

Innomed-Europe Tel. +41 41 740 67 74  
info@innomed-europe.com

1.800.548.2362

© 2023 Innomed, Inc.