



The osteotomized coracoid is fixed with the lateral, joint-facing side of the coracoid (where the ligament is) facing the flange of the drill-guide.



Two 3.5 mm guiding holes are drilled.



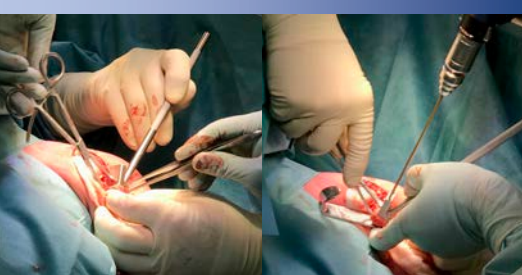
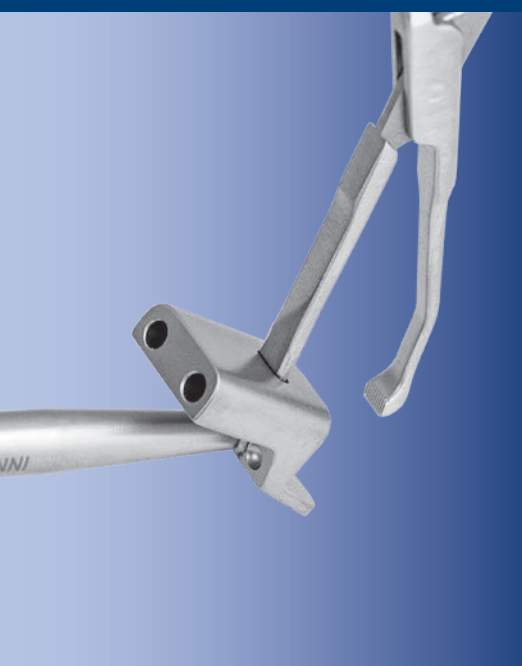
The drill guide is held against the antero-inferior glenoid, the flange sitting on the cartilage, and the first 2.5 mm thread hole for screw fixation is drilled.



The second 2.5 mm thread hole is drilled parallel to a 2.5 mm pin that has been inserted in the first hole to ensure correct distance and orientation.



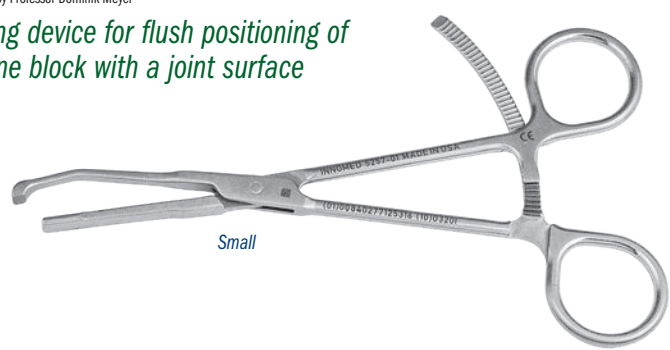
The coracoid is now fixated using two 3.5 mm or 4.5 mm screws flush with the cartilage, due to the identical distance between flange and screw holes on coracoid and glenoid.



# Meyer Latarjet Drill Guide & Forceps Assembly

Designed by Professor Dominik Meyer

*Aiming device for flush positioning of a bone block with a joint surface*



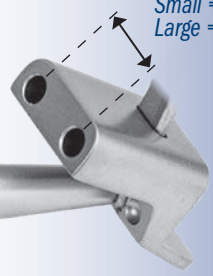
Small



Large



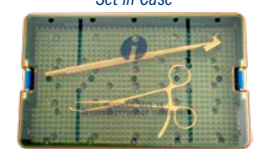
Distance between Drill Holes:  
 Small = .390" (9,9 mm)  
 Large = .492" (12,5 mm)



PRODUCT NO'S:	
<b>SMALL SET</b>	<b>LARGE SET</b>
5257-00 [Small Set]	5258-00 [Large Set]
Set Includes:	Set Includes:
5257-01 [Latarjet Forceps, Small] Overall Length: 5.875" (14,9 cm) Tongue and Clamp Arm Width: .22" (5,6 mm)	5258-01 [Latarjet Forceps, Large] Overall Length: 5.875" (14,9 cm) Tongue and Clamp Arm Width: .32" (8,15 mm)
5257-02 [Latarjet Drill Guide, Small] Overall Length: 8.5" (21,6 cm) Drill Hole Diameter: 3.5 mm Distance between Drill Holes: .390" (9,9 mm)	5258-02 [Latarjet Drill Guide, Large] Overall Length: 8.5" (21,6 cm) Drill Hole Diameter: 3.5 mm Distance between Drill Holes: .492" (12,5 mm)
1025 [Case]	1025 [Case]



Set in Case



ISO 13485:2016

FREE TRIAL ON MOST INSTRUMENTS

Scan to Launch Our Website



103 Estus Drive, Savannah, GA 31404  
 www.innomed.net info@innomed.net

912.236.0000 Phone  
 912.236.7766 Fax

Innomed-Europe Tel. +41 41 740 67 74  
 Fax +41 41 740 67 71

1.800.548.2362

© 2020 Innomed, Inc.