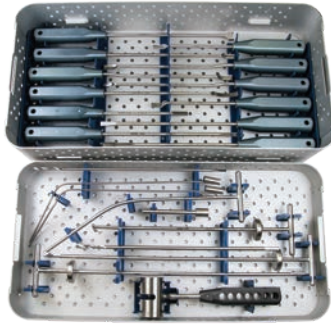


PRODUCT NO'S:	
S7500-00	[Complete Set with Case]
<i>Individual Instruments:</i>	
S7505	[Narrow Cement Removal Gouge, Short] Shaft Length: 15 cm Gouge: 9 mm, negative
S7507	[Narrow Cement Removal Gouge, Long] Shaft Length: 24 cm Gouge: 9 mm, negative
S7510	[Narrow Offset Cement Removal Gouge] Shaft Length: 24 cm Gouge: 9 mm, negative
S7515	[Acetabular Chisel] Shaft Length: 24 cm Chisel: 7.5 mm
S7520	[Offset Chisel] Shaft Length: 15 cm Chisel: 9 mm
S7525	[Flared Angle Gouge] Shaft Length: 24 cm Gouge: 9 mm, positive, angle 15° down
S7530	[Wide Gouge] Shaft Length: 24 cm Gouge: 11.5 mm, negative
S7535	[“V” Splitter] V-Shaped Chisel: 7 mm
S7587	[Saddle Punch] Shaft Length: 24 cm Punch: 16.5 mm x 6.5 mm
S7590	[Cement Splitting Osteotome] Shaft Length: 24 cm
S7595	[Cement Removal Osteotome, Short] Shaft Length: 15 cm Osteotome: 8 mm
S7597	[Cement Removal Osteotome, Long] Shaft Length: 24 cm Osteotome: 8 mm
S7540	[4.4 mm Drill]
S7545	[4.4 mm Drill Guide]
S7550	[6.4 mm Drill]
S7555	[6.4 mm Drill Guide]
S7560	[Straight Cement Removal Hook] Hook Curette: 10 mm
S7565	[Curved Cement Removal Hook] Hook Curette: 10 mm
S7570	[Cross Bar]
S7575	[7 mm T-Handle Conical Tap]
S7580	[9 mm T-Handle Conical Tap]
S7585	[Slotted Mallet]
9075	[Case Only]

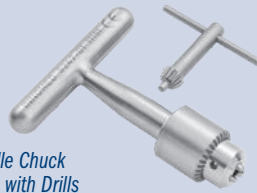


Mueller-Type Cement Removal Instruments



Used for cement removal in the knee, hip, and shoulder

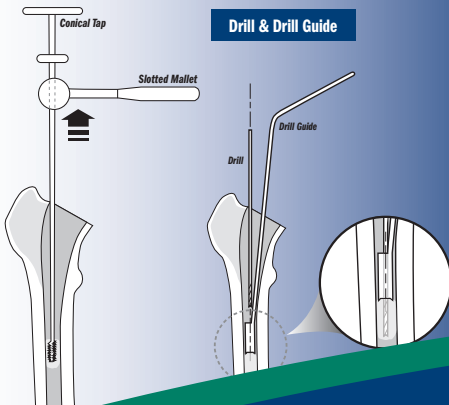
Optional Instruments:



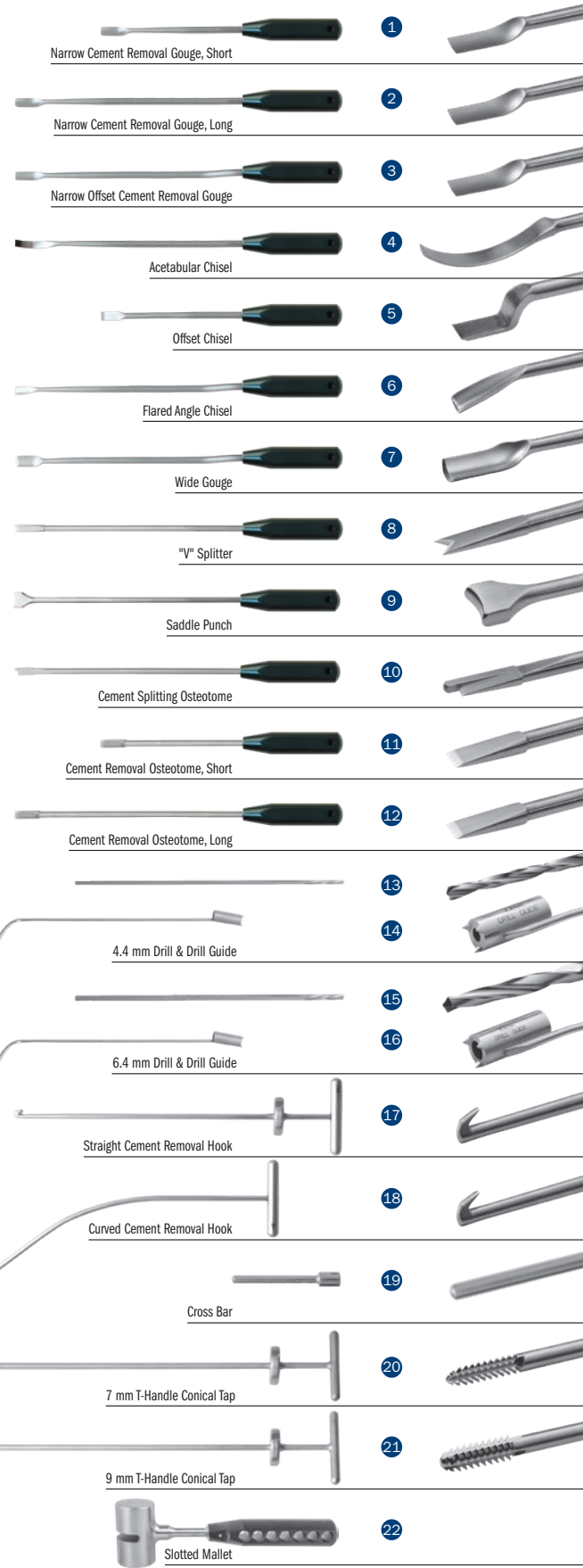
T-Handle Chuck for use with Drills

PRODUCT NO'S:	
8247-00	[T-Handle Chuck & Key]
8247-01	[T-Handle Chuck]
8247-02	[Chuck Key]

Conical Tap & Mallet



Drill & Drill Guide



www.innomed.net



INNOMED

ISO 13485:2016

FREE TRIAL ON MOST INSTRUMENTS



103 Estus Drive, Savannah, GA 31404
info@innomed.net

912.236.0000 Phone
912.236.7766 Fax

Innomed-Europe Tel. +41 41 740 67 74
info@innomed-europe.com

1.800.548.2362