

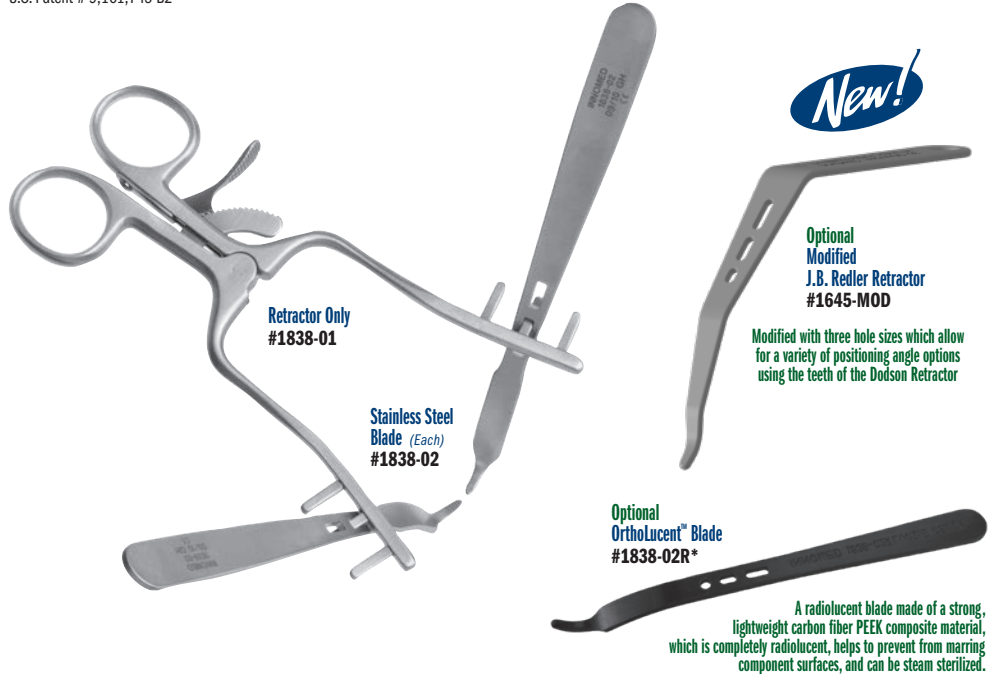
Dodson Modular Retractor

Designed by Mark A. Dodson, MD

Designed to help expose a small to medium size bone for internal fixation—can be used for distal radius, ulna, humerus, and fibula fractures

Allows the limb to be rotated (pronated or supinated) without loss of exposure. The hohmann retractors have three hole sizes which allow for a variety of positioning angle options using the teeth of the self-retaining retractor, or can also be positioned in-between the teeth. The hohmann is placed around the bone, and thus reduces the force on the soft tissues while increasing exposure. Can be used in the forearm to treat radius and ulna shaft fractures, humerus fractures, as well as in the leg for fibula fractures.

U.S. Patent # 9,161,745 B2



PRODUCT NO:
1838-00 [Set]
Set Includes / Available Individually:
1838-01 [Retractor Only] Overall Length: 5.5" (14 cm)
1838-02 [Stainless Steel Blade] <i>Two included in set, one with this product number</i> Overall Length: 5.25" (13,3 cm) Blade Width: 3/8" (9 mm)
1025 [Sterilization Case Only]

Set consists of one self-retaining retractor, two stainless steel mini-hohmann retractor blades, and a sterilization case.

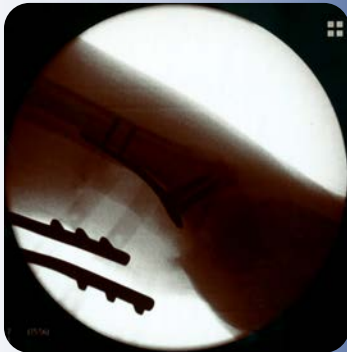
MADE EXCLUSIVELY FOR INNOVIMED IN GERMANY

Optional Parts – Not Included In Set:
1838-02R* [OrthoLucent™ Blade] Overall Length: 5.25" (13,3 cm) Blade Width: 3/8" (9 mm)
1645-MOD [Modified J.B. Redler Retractor] Overall Length: 12.375" (31,4 cm) Blade Depth: 2.85" (7,3 cm) Blade Width: 20 mm Prong Width at Tip: 5 mm

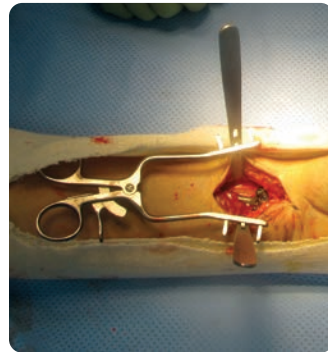
MADE EXCLUSIVELY FOR INNOVIMED IN SWITZERLAND



Radiolucent mini-hohmann retractor and Modified J.B. Redler retractor blades are optional and sold separately.



X-rays with optional OrthoLucent™ blades in place.



X-ray with standard stainless steel blades in place.



www.innomed.net



FREE TRIAL ON MOST INSTRUMENTS

INNOMEDI

ISO 13485:2016



103 Estus Drive, Savannah, GA 31404
info@innomed.net

912.236.0000 Phone
912.236.7766 Fax

Innomed-Europe Tel. +41 41 740 67 74
info@innomed-europe.com

1.800.548.2362

© 2025 Innomed, Inc.