



Desai Clearview Open Blade Self-Retaining Retractor

Designed by Sarang Desai, DO

Open blade design allows clear visualization of soft tissue and neurovascular structures being retracted

Tapered blades allows 90° deep soft tissue retraction and easy insertion into the wound.
Open blades also allow surgeon to work in open blade area, such as for gastroc recession surgery.

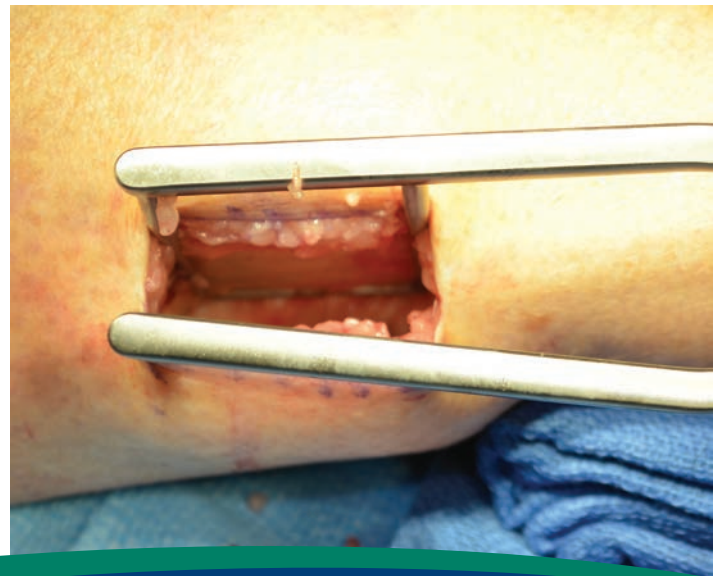
PRODUCT NO:

1858

Overall Length: 7.25" (18,4 cm)

Blade Depth: 3" (7,6 cm)

Blade Width: 1.25" (3,2 cm)



ISO 9001:2008 • ISO 13485:2003

FREE TRIAL ON MOST INSTRUMENTS

Scan to
Launch Our
Website



103 Estus Drive, Savannah, GA 31404
www.innomed.net info@innomed.net

912.236.0000 Phone
912.236.7766 Fax

Innomed-Europe Tel. +41 41 740 67 74
Fax +41 41 740 67 71

INNOMED

1.800.548.2362