

5 mm 6.5 mm 8 mm 9 mm 10 mm 11 mm

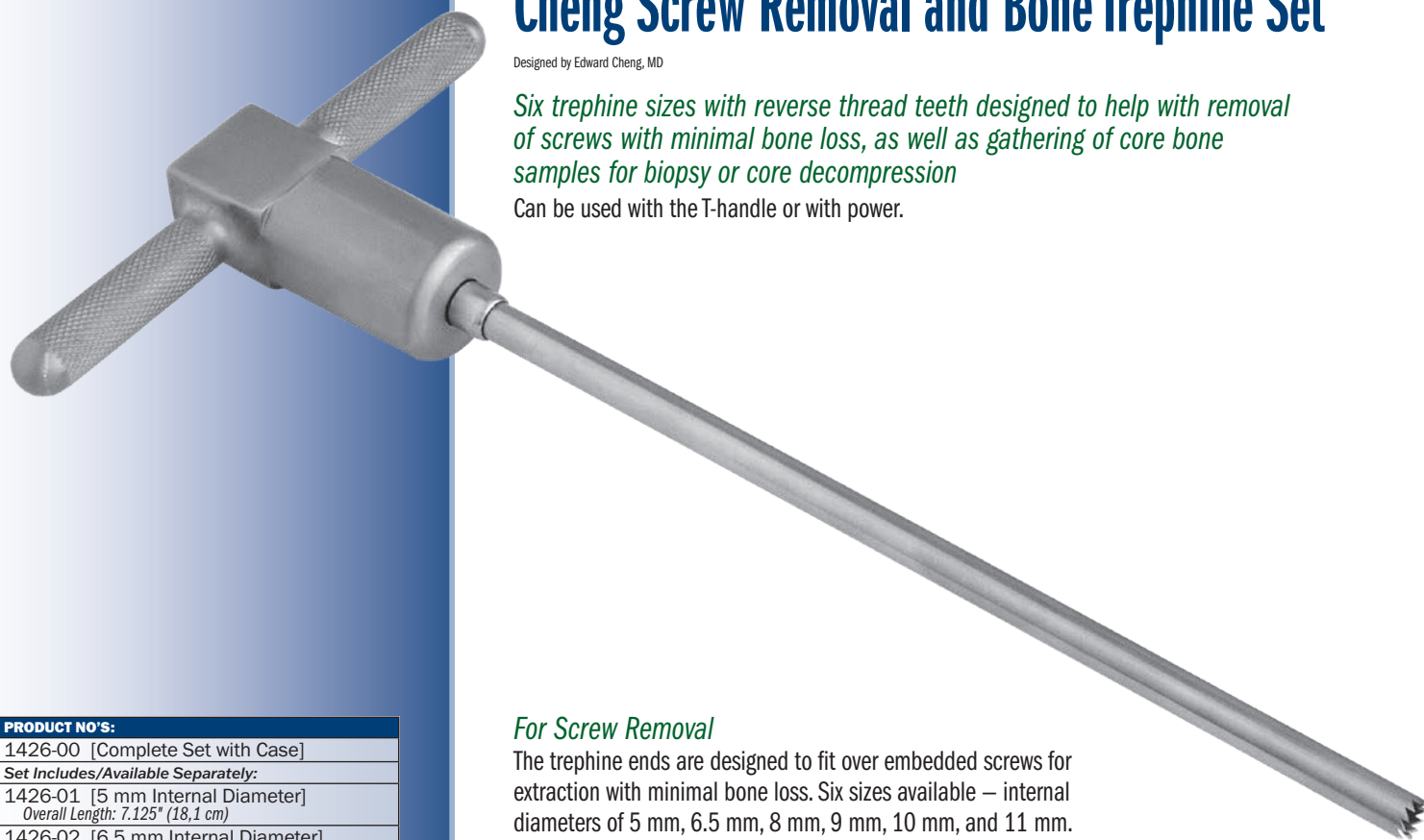
Trephine Sizes

Cheng Screw Removal and Bone Trephine Set

Designed by Edward Cheng, MD

Six trephine sizes with reverse thread teeth designed to help with removal of screws with minimal bone loss, as well as gathering of core bone samples for biopsy or core decompression

Can be used with the T-handle or with power.



For Screw Removal

The trephine ends are designed to fit over embedded screws for extraction with minimal bone loss. Six sizes available – internal diameters of 5 mm, 6.5 mm, 8 mm, 9 mm, 10 mm, and 11 mm. The T-handle allows for precise, controlled use.

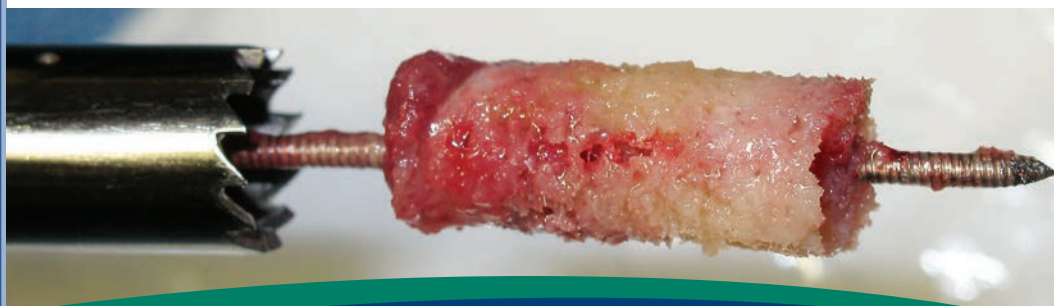
For Core Bone Sampling

Cannulated T-handle and trephines allow use of a standard 1.6 mm (.062") threaded K-wire to help facilitate grasping and removal of a core bone sample for biopsy or core decompression. Variety of core diameters yields bone samples of sufficient size for pathology. K-wire not included.

PRODUCT NO'S:	
1426-00	[Complete Set with Case]
<i>Set Includes/Available Separately:</i>	
1426-01	[5 mm Internal Diameter] Overall Length: 7.125" (18,1 cm)
1426-02	[6.5 mm Internal Diameter] Overall Length: 7.125" (18,1 cm)
1426-03	[8 mm Internal Diameter] Overall Length: 7.125" (18,1 cm)
1426-05	[9 mm Internal Diameter] Overall Length: 7.125" (18,1 cm)
1426-06	[10 mm Internal Diameter] Overall Length: 7.125" (18,1 cm)
1426-07	[11 mm Internal Diameter] Overall Length: 7.125" (18,1 cm)
1425-14	[Handle Assembly] Dimensions: 4" x 2" (10,2 cm x 5,1 cm)
1025	[Sterilization Case]
<i>Replacement Part:</i>	
1425-14-B-COMP	[Handle Retaining Screw]



K-wire not included.



ISO 13485:2016

FREE TRIAL ON MOST INSTRUMENTS

INNOMED 



103 Estus Drive, Savannah, GA 31404
www.innomed.net info@innomed.net

912.236.0000 Phone
912.236.7766 Fax

Innomed-Europe Tel. +41 41 740 67 74
Fax +41 41 740 67 71

1.800.548.2362

© 2022 Innomed, Inc.