

Cheng Biopsy Trephine System

Designed by Edward Cheng, MD

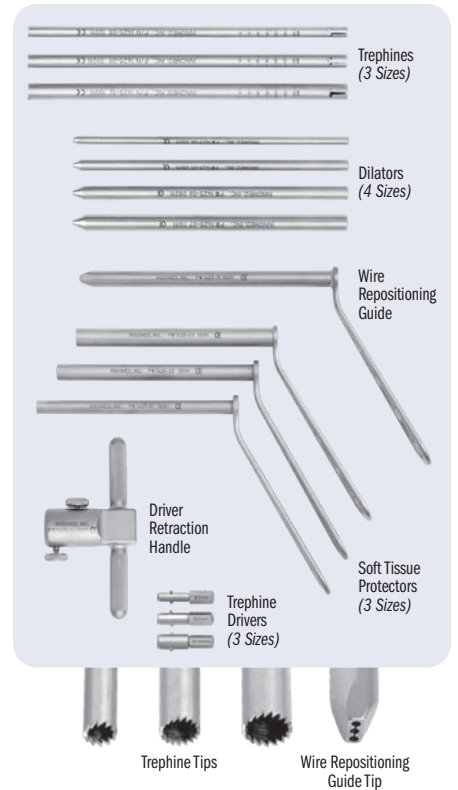


Cannulated T-handle and trephines allow use of a standard 1.6 mm (.062") threaded K-wire to help facilitate grasping and removal of a core bone sample for biopsy or core decompression

- ▶ Allows use of trephine at oblique angles to bone surface by using an anchoring K-wire and cannulated trephine
- ▶ Avoids "skipping" of trephine teeth on bone surface
- ▶ Facilitates optimal approach angle and direction of trephine
- ▶ Variety of core diameters yields bone samples of sufficient size for pathology
- ▶ Adapters allow for use of a power drill
- ▶ Minimally invasive – soft tissue sleeve protects surrounding structures and tissue
- ▶ Can also be used for bone graft harvesting
- ▶ Repositioning guide allows easy adjustment of targeting K-wire

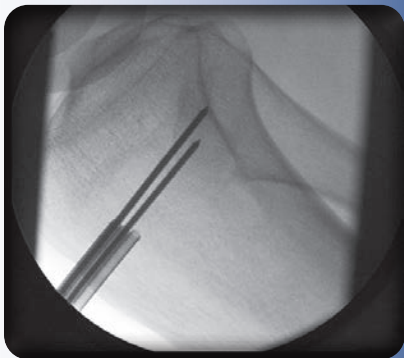
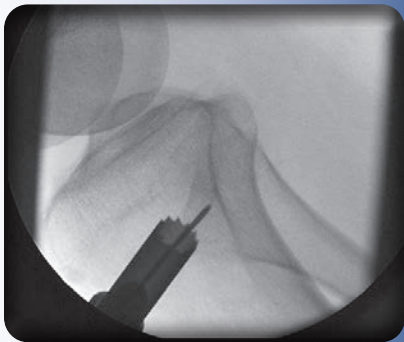
PRODUCT NO'S:

1425-00	[Complete Set with Case]
Set Includes/Available Separately:	
1425-01	[Soft Tissue Protector - Small]
1425-02	[Soft Tissue Protector - Medium]
1425-03	[Soft Tissue Protector - Large]
1425-04	[Dilator - 4.75 mm]
1425-05	[Dilator - 6.25 mm]
1425-06	[Dilator - 7.75 mm]
1425-07	[Dilator - 9.25 mm]
1425-08	[Trephine - Small] Internal Diameter: 5mm Overall Length: 7.125" (18,1 cm)
1425-09	[Trephine - Medium] Internal Diameter: 6.5 mm Overall Length: 7.125" (18,1 cm)
1425-10	[Trephine - Large] Internal Diameter: 8 mm Overall Length: 7.125" (18,1 cm)
1425-11	[Drive End - Small]
1425-12	[Drive End - Medium]
1425-13	[Drive End - Large]
1425-14	[Driver Retraction Handle] Includes (2) Handle Retaining Screws (#1425-14-B-COMP)
1425-15	[3-Hole Wire Repositioning Guide]
1425-Case	[Case]
Replacement Part:	
1425-14-B-COMP	[Handle Retaining Screw]



K-wire not included.

SEE REVERSE SIDE FOR PROCEDURE



ISO 13485:2016

FREE TRIAL ON MOST INSTRUMENTS

INNOMED



103 Estus Drive, Savannah, GA 31404
www.innomed.net info@innomed.net

912.236.0000 Phone
912.236.7766 Fax

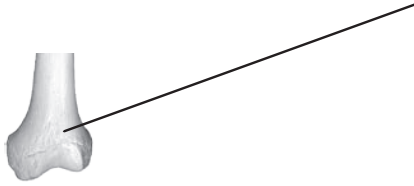
Innomed-Europe Tel. +41 41 740 67 74
Fax +41 41 740 67 71

1.800.548.2362

© 2022 Innomed, Inc.

Cheng Biopsy Trepine System

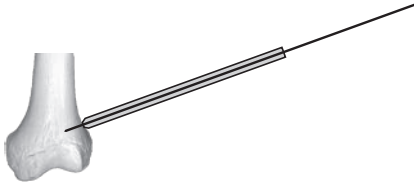
1 Insert threaded wire to target site.



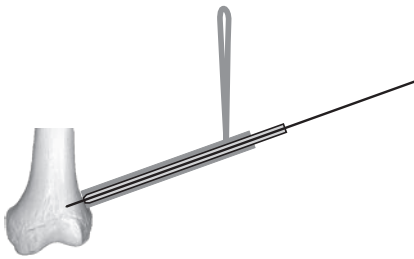
1a If wire placement is not satisfactory, the target repositioning guide can be used to help accurately reposition the wire.



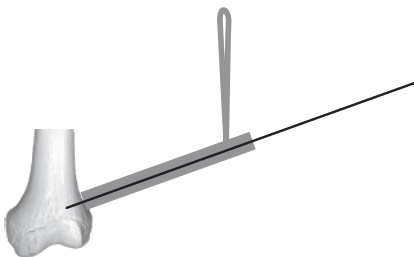
2 Install soft tissue dilator for desired bone core size over wire.



3 Install appropriate size tissue protector over dilator.



4 Remove dilator leaving tissue protector in place.



5 Insert one size smaller dilator over wire.



6 Insert trephine over dilator.



7 Install hex drive adapter on trephine and connect drill.



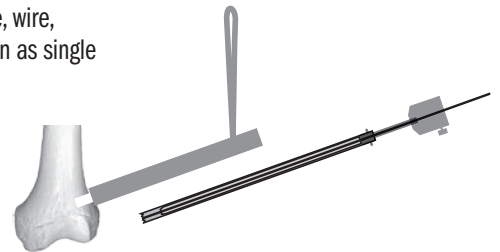
8 Advance trephine into site and remove drill.



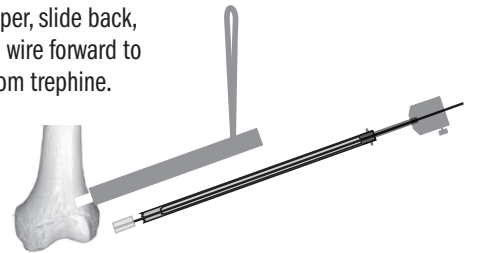
9 Attach wire grasper to wire with locking screw.



10 Remove trephine, wire, dilator and specimen as single unit.



11 Loosen wire grasper, slide back, re-tighten, push/tap wire forward to remove specimen from trephine.



12 Optional: Use pituitary rongeur (not supplied) or curette to obtain additional tumor tissue samples

