

# Chang Pin Clamp

Designed by Win Chang, MD

*Designed to allow accurate insertion of pins for internal fixation*

Used for small bones, the cannula has a 1.8 mm internal diameter.

**PRODUCT NO:**

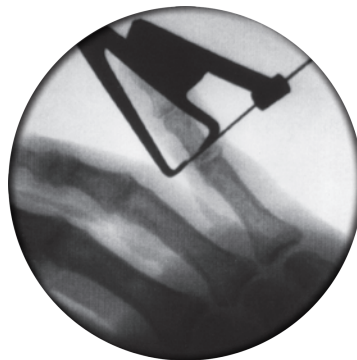
1760-01

Cannula Internal Diameter: 1.8 mm

Overall Length: 6" (15,2 cm)

Locking Ratchet Opens To: 25 mm

MADE EXCLUSIVELY  
FOR INNOMED IN  
GERMANY



(Prototype used in  
X-ray images)



[www.innomed.net](http://www.innomed.net)

ISO 13485:2016

FREE TRIAL ON MOST INSTRUMENTS

**INNOMED** 



103 Estus Drive, Savannah, GA 31404  
info@innomed.net

912.236.0000 Phone  
912.236.7766 Fax

Innomed-Europe Tel. +41 41 740 67 74  
info@innomed-europe.com

1.800.548.2362