

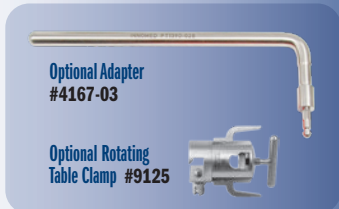


Set #4167-00

PRODUCT NO'S:	
4167-00	[Positioner Set]
Set Includes:	
4167-01	[Cradle] Dimensions: 7.5" x 7.75" (19,1 x 19,7 cm)
4167-02	[Rod] Width: 13,6" (34,5 cm) Height: 20,6" (52,3 cm)
4150-PS	[Post Screw] Two included in set, one with this product number
2760-P	[Silicone Pad] Dimensions: 9" x 8" x ½" thick (22,9 x 20,3 x 1,3 cm)
[Orange Strap] Dimensions: 2" x 31,5" (5,1 x 80 cm) Two included in set, see below for replacement 10-pack	
[Short Black Straps] Dimensions (Each): 2" x 24" (5,1 x 61 cm) Two included in set, see below for replacement 10-pack	



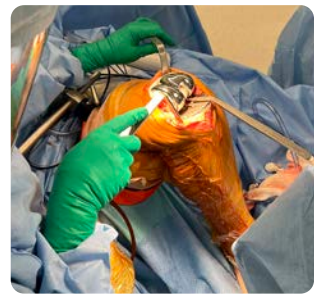
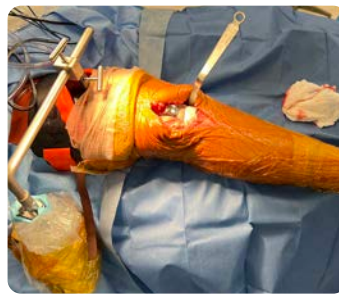
PRODUCT NO'S:	
Replacement Parts:	
2760-P	[Silicone Pad] Dimensions: 9" x 8" x ½" thick (22,9 x 20,3 x 1,3 cm)
8129-P	[Short Black Straps] 10-Pack Dimensions (Each): 2" x 24" (5,1 x 61 cm)
8130-P	[Orange Straps] 10-Pack Dimensions (Each): 2" x 31,5" (5,1 x 80 cm)



Optional Adapter
#4167-03

Optional Rotating
Table Clamp #9125

PRODUCT NO'S:	
Optional Parts:	
4167-03	[Adapter] Width: 12,4" (31,5 cm) Height: 4,875" (12,4 cm)
9125	[Rotating Table Clamp]



Chandran Thigh Lift Positioner

Designed by Rama E. Chandran, MD

Designed to help lift and position the thigh from above during knee surgery



Post Screw
#4150-PS

Post Screw
#4150-PS

Cradle #4167-01

Orange Strap
#8130

Rod #4167-02

Optional Adapter
#4167-03

The optional thigh lift adapter is designed for use with a hydraulic lift device instead of the manual lift rod with table clamp.



www.innomed.net



INNOMED

ISO 13485:2016

FREE TRIAL ON MOST INSTRUMENTS



103 Estus Drive, Savannah, GA 31404
info@innomed.net

912.236.0000 Phone
912.236.7766 Fax

Innomed-Europe Tel. +41 41 740 67 74
info@innomed-europe.com

1.800.548.2362

© 2025 Innomed, Inc.