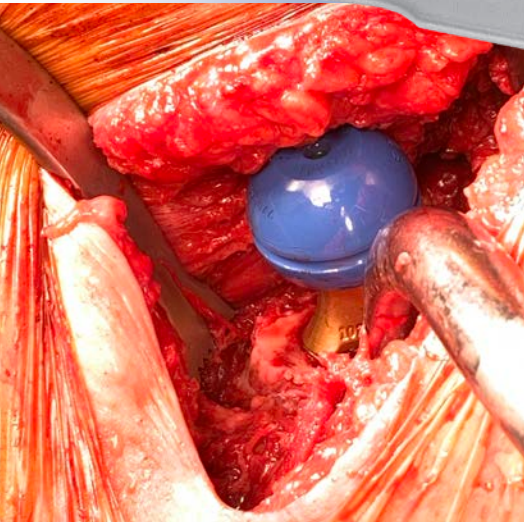


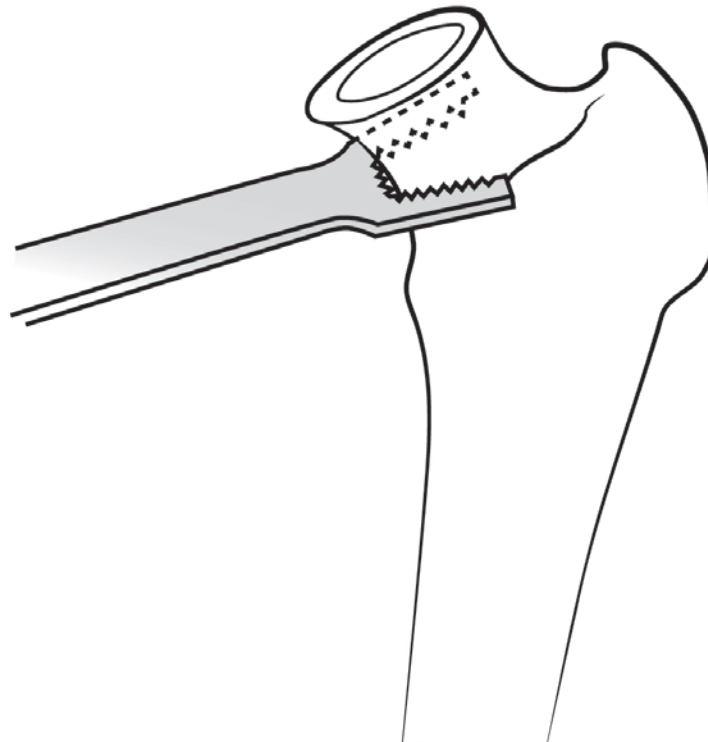
Chandran Femoral Neck Retractor with Sharp Teeth

Designed by Rama E. Chandran, MD

Designed to grasp and expose the femoral neck, the teeth help prevent the retractor from slipping or shifting under downward pressure



PRODUCT NO:
6141
Overall Length: 14.25" (36,2 cm)
Blade width at End: 1.25" (3,2 cm)
Prong Length: 1" (2,54 cm)



www.innomed.net



ISO 13485:2016

FREE TRIAL ON MOST INSTRUMENTS

INNOMED



103 Estus Drive, Savannah, GA 31404
info@innomed.net

912.236.0000 Phone
912.236.7766 Fax

Innomed-Europe Tel. +41 41 740 67 74
info@innomed-europe.com

1.800.548.2362