

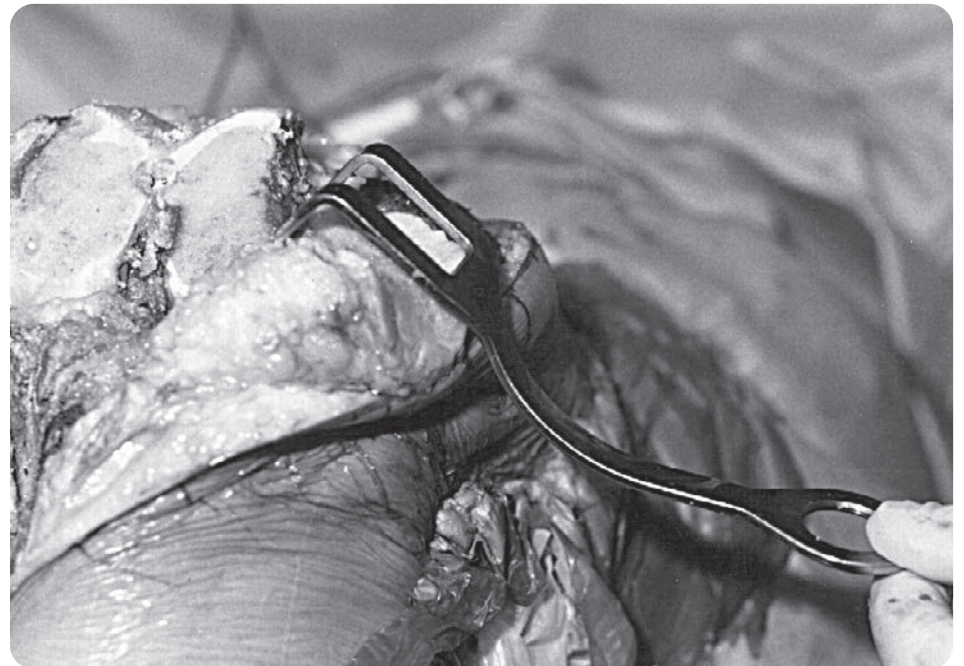
AORI Patellar Retractor

Designed by Gerard A. Engh, MD

Designed to enhance exposure during total knee arthroplasty, the retractor has a deep basket and two rows of teeth to grab and hold to the lateral side of the patella

The curved handle provides a fulcrum so that the applied force will both displace and evert the patella from the femur. The patellar retractor is placed after a routine midline, midvastus, or medial para patellar surgical approach to the knee. Once the patella is everted the patellar retractor is applied to the lateral border of the patella.

PRODUCT NO:
4690
Overall Length: 7" (17,8 cm)
Prong Width: 10 mm 22 mm Gap 10 mm



www.innomed.net

ISO 13485:2016

FREE TRIAL ON MOST INSTRUMENTS

INNOMED



103 Estus Drive, Savannah, GA 31404
info@innomed.net

912.236.0000 Phone
912.236.7766 Fax

Innomed-Europe Tel. +41 41 740 67 74
info@innomed-europe.com

1.800.548.2362