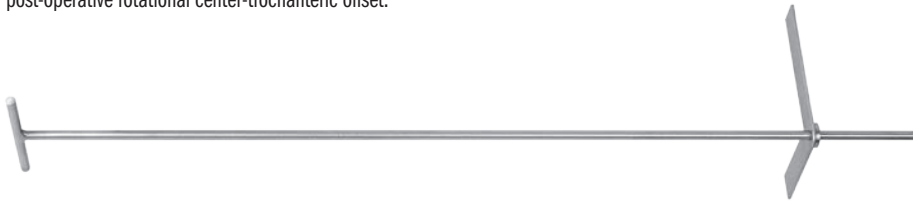


Llinas Vertical Offset Gauge

Designed to help equalize the pre- and post-operative vertical hip offset

Used intra-operatively to help determine the vertical distance of offset (if any) between the rotational center of the femoral head and the top of the greater trochanter. The measurement can then be used for verification, after femoral stem and head implantation but before final fixation, to help determine what adjustments (if any) are necessary to equalize the pre- and post-operative rotational center-trochanteric offset.



To measure and assess the rotational center-trochanteric offset:

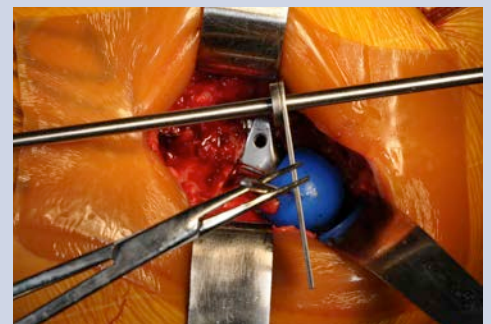
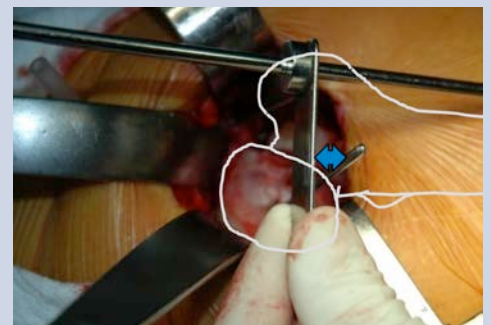
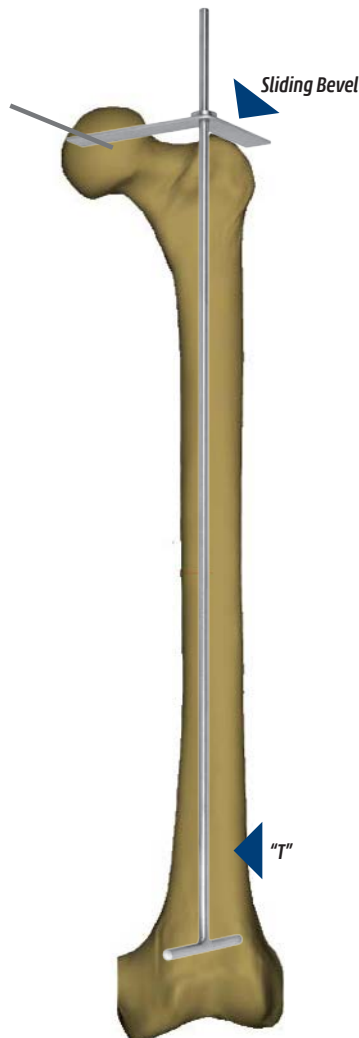
After a pin has been inserted into the rotational center of the femoral head—under fluoroscopy and based on pre-operative templating*—the fixed “T” end of the gauge is positioned along the leg such that the long stem of the “T” is aligned as if bisecting the long axis of the femur.

Next, the sliding trochanter bevel is positioned so that one bevel leg touches the top of the greater trochanter and the other bevel leg is positioned above the femoral head.

The offset distance (if any) from the pin to the bevel leg can then be measured.

This measurement can be used for verification, after femoral stem and head implantation but before final fixation, to help determine what adjustments (if any) are necessary to equalize the pre- and post-operative rotational center-trochanteric offset.

*Note: If there is a fracture, it may be necessary look at the other leg to try to help determine pre-operative measurements.



PRODUCT NO:
1133-02 [Llinas Vertical Offset Gauge]
Overall Length: 17.25" (43.8 cm)
Sliding Bevel Arm Lengths: 2.4" (6 cm) / 3.15" (8 cm)



Designed by Adolfo Llinás, MD

Innomed, a manufacturer of surgical instruments, does not practice medicine and does not recommend this or any other surgical technique for use on a specific patient. The surgeon who performs any procedure is responsible for determining and utilizing the appropriate techniques for such procedure for each individual patient. Innomed is not responsible for the selection of the appropriate surgical technique to be used for an individual patient.

ISO 9001:2008 • ISO 13485:2003

FREE TRIAL ON MOST INSTRUMENTS

Scan to
Launch Our
Website



103 Estus Drive, Savannah, GA 31404
www.innomed.net info@innomed.net

912.236.0000 Phone
912.236.7766 Fax

Innomed-Europe Tel. +41 41 740 67 74
Fax +41 41 740 67 71

INNOMED

1.800.548.2362