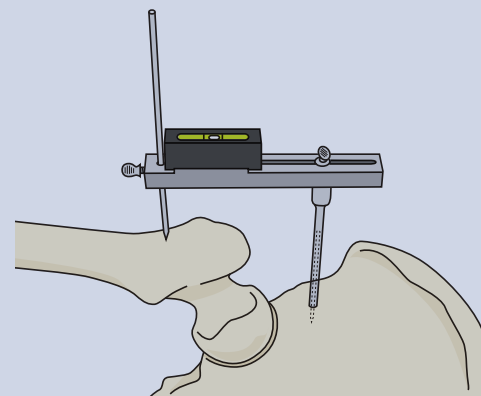
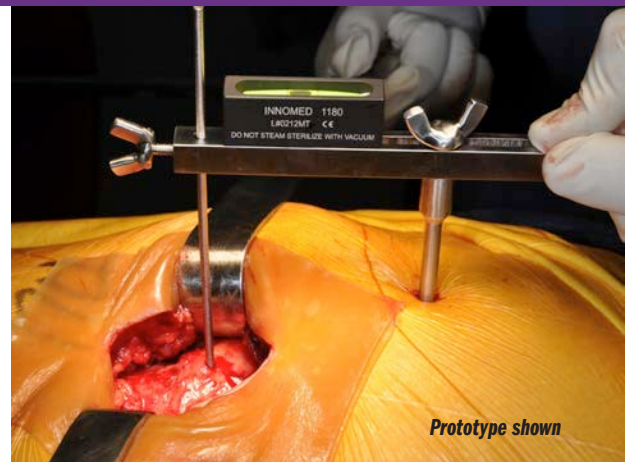
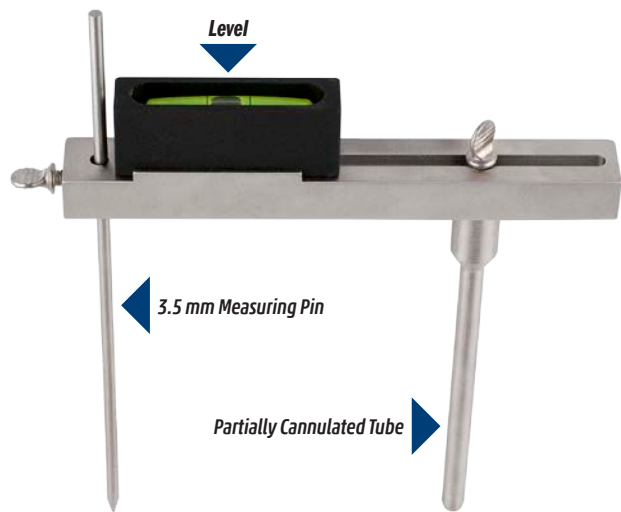


## Llinas Leg Length & Lateral Offset Gauge

*Designed to help equalize the pre- and post-operative leg length/lateral hip offset*

Used intra-operatively to establish measurements of both leg length and lateral hip offset. The measurements can then be used for verification, after femoral stem and head implantation but before final fixation, to help determine what adjustments (if any) are necessary.



### Proper lateralization of the femoral shaft can help:

- ▶ restore offset
- ▶ reduce femoropelvic impingement
- ▶ increase abductor tension

### To measure and assess the leg length/lateral hip offset:

- 1 Insert a standard 1/8" (3,2 mm) steinmann pin (not provided) into the pelvis above the acetabulum and cut it so that it sticks out about 20 mm above the skin.
- 2 Lower the partially cannulated tube of the Llinas Gauge until you hear/feel a "clunk", which will signal either:
  - a) the ceiling of the sleeve of the cannulated tube hitting the top of the pin, or
  - b) the bottom rim of the cannulated tube hitting the bone

If necessary, unlock, adjust, and re-lock the cannulated tube of the unit to allow for measurement to a point on the femur below the greater trochanter.

With the level in position in the grooved slot on the top of the device – insert the provided 3.5 mm measuring pin in the distal end and adjust the depth of the pin to touch the femoral bone when the unit is level. (The level is used to help ensure measurement positioning equality before & after reconstruction.) Lock the pin depth at that position by tightening the locking screw to preserve this measurement. Also, mark the point of contact so that it can be referenced later.

The unit can then be removed and set aside until later in the procedure when you are ready to check the leg length/lateral hip offset again and make adjustments.

With the implant now in place, the gauge can be returned to its previous position, and the lateral offset (if any) can be assessed. If the measuring pin does not reach the femur, the lateral offset should be adjusted distally. If the measuring pin touches the femur but the cannulated tube does not "clunk" as above, the lateral offset should be adjusted medially.

Also, the change in leg length (if any) can be assessed by the location of the pin as compared to the mark previously made on the femur.

PRODUCT NO'S:	
1133-00	[Set]
<b>Set Includes (and also available individually):</b>	
1133-01	[Llinas Length and Lateral Offset Gauge] Slider Bar Length: 5" (12,7 cm) Cannulated Tube Length: 3.95" (10 cm)
1133-01-C	[Standard 3.5 mm Measuring Pin]
1180	[Sterilizable Level] Dimensions: 2" x .5" x .75" (5,1 cm x 1,3 cm x 1,9 cm)
1025	[Sterilizable Case]
<b>Other Replacement Parts:</b>	
1133-01-B	[Partially Cannulated Tube]



Designed by Adolfo Llinás, MD

Innomed, a manufacturer of surgical instruments, does not practice medicine and does not recommend this or any other surgical technique for use on a specific patient. The surgeon who performs any procedure is responsible for determining and utilizing the appropriate techniques for such procedure for each individual patient. Innomed is not responsible for the selection of the appropriate surgical technique to be used for an individual patient.

ISO 9001:2008 • ISO 13485:2003

FREE TRIAL ON MOST INSTRUMENTS

Scan to  
Launch Our  
Website



103 Estus Drive, Savannah, GA 31404  
www.innomed.net info@innomed.net

912.236.0000 Phone  
912.236.7766 Fax

Innomed-Europe Tel. +41 41 740 67 74  
Fax +41 41 740 67 71

**INNOMED**

1.800.548.2362