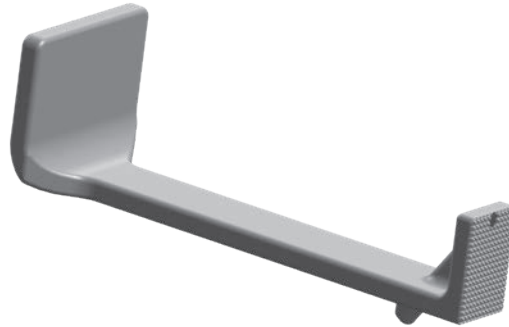


Zell Fixed Angle Wire Guide

Designed by Richard Zell, MD

Designed to help with placement of guide wires and k-wires in foot and ankle surgeries, such as bunion surgery, midfoot fusion, and midfoot ORIF



PRODUCT NO:

3021

Overall Length: 2.75" (7 cm)

Handle Platform: 1" x .875" (25 x 22 mm)

Guide Tube Angle: 35°

Guide Tube for wires up to: .052"/1.3 mm



ISO 13485:2016

FREE TRIAL ON MOST INSTRUMENTS



103 Estus Drive, Savannah, GA 31404
www.innomed.net info@innomed.net

912.236.0000 Phone
912.236.7766 Fax

Innomed-Europe

Tel. +41 41 740 67 74
Fax +41 41 740 67 71

1.800.548.2362

INNOMED