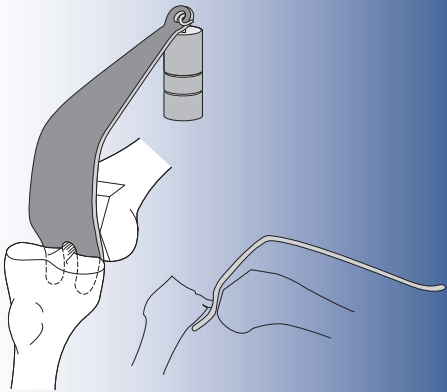


# Wide PCL Retractor

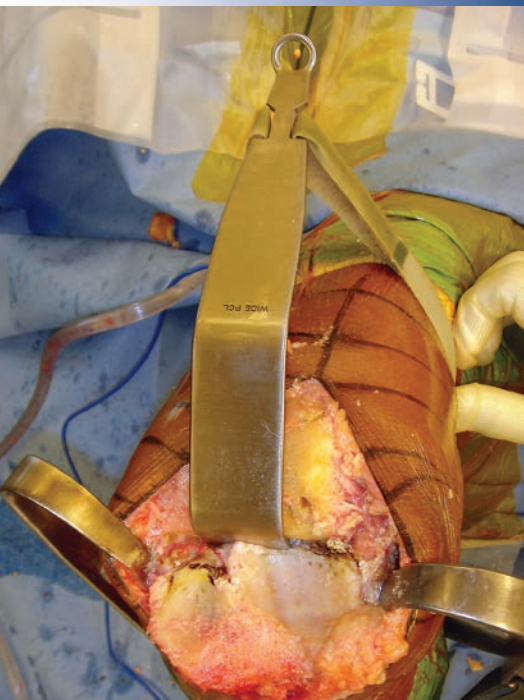
Designed by S. David Stulberg, MD

*Helps expose the proximal tibia for better surface access*

Designed to expose the proximal tibia during total knee surgery for better access to the articulating surfaces. The handle is contoured to allow the surgeon a clear field of view of the operating area. Modular weights can be used to help hold the retractor in place.

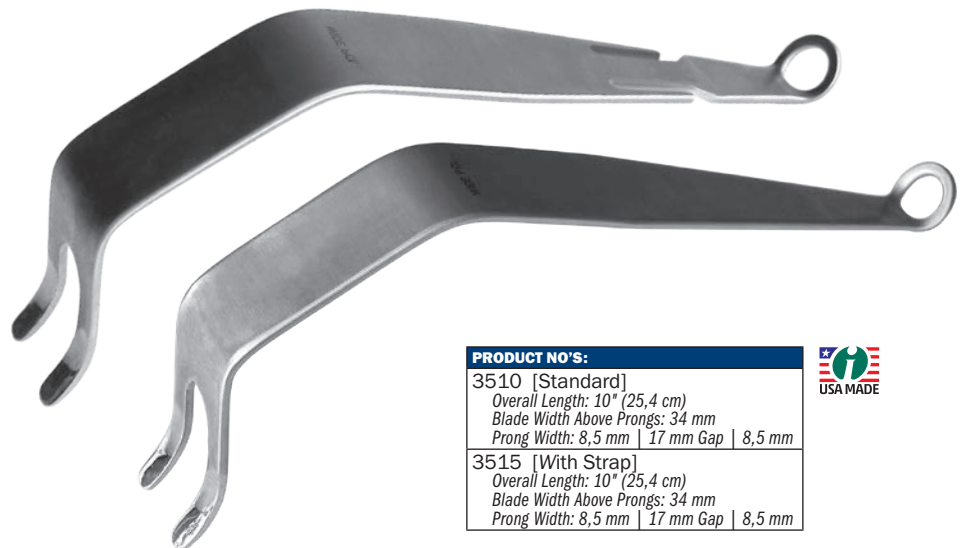


PRODUCT NO:	
3520 [Standard]	
Overall Length: 10" (25,4 cm)	
Blade Width Above Prongs: 57 mm	
Prong Width: 8,5 mm   17 mm Gap   8,5 mm	
3525 [With Strap]	
Overall Length: 10" (25,4 cm)	
Blade Width Above Prongs: 34 mm	
Prong Width: 8,5 mm   17 mm Gap   8,5 mm	



# MIS Modified Wide PCL Retractor

Designed by S. David Stulberg, MD



PRODUCT NO'S:	
3510 [Standard]	
Overall Length: 10" (25,4 cm)	
Blade Width Above Prongs: 34 mm	
Prong Width: 8,5 mm   17 mm Gap   8,5 mm	
3515 [With Strap]	
Overall Length: 10" (25,4 cm)	
Blade Width Above Prongs: 34 mm	
Prong Width: 8,5 mm   17 mm Gap   8,5 mm	



[www.innomed.net](http://www.innomed.net)

ISO 13485:2016

FREE TRIAL ON MOST INSTRUMENTS

# INNOMED



103 Estus Drive, Savannah, GA 31404  
info@innomed.net

912.236.0000 Phone  
912.236.7766 Fax

Innomed-Europe Tel. +41 41 740 67 74  
info@innomed-europe.com

1.800.548.2362

© 2023 Innomed, Inc.