

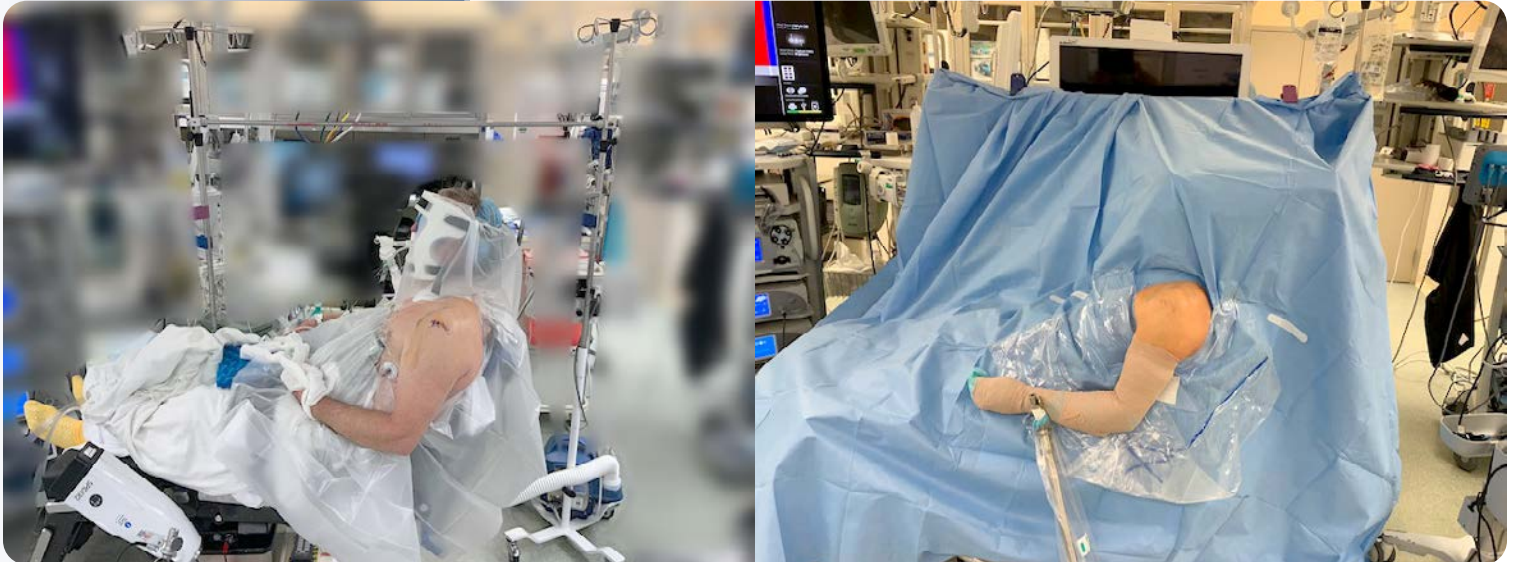
Wiater Shoulder Drape Crossbar

Designed by J. Michael Wiater, MD, FAOS, FAOA

Designed for use during shoulder surgery in the beach chair position or during other surgical procedures to support and keep the surgical drapes away from the surgical site, maintain a sterile field, and help to allow the anesthesia provider good access to the airway



PRODUCT NO:
2417
Overall Length: 60" (152,4 cm)



www.innomed.net

ISO 13485:2016

FREE TRIAL ON MOST INSTRUMENTS



103 Estus Drive, Savannah, GA 31404
info@innomed.net

912.236.0000 Phone
912.236.7766 Fax

Innomed-Europe Tel. +41 41 740 67 74
info@innomed-europe.com

1.800.548.2362

INNOMED