

Tibial Impactor

Design modified by Atul F. Kamath, MD

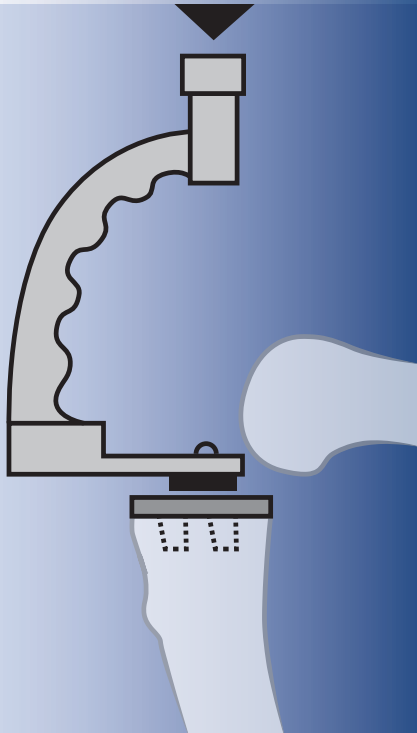
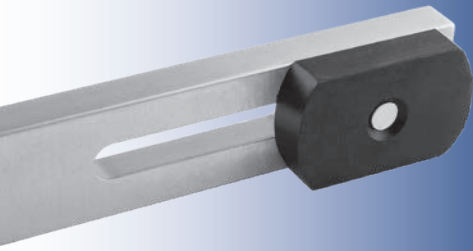
Assists in MIS unicompartmental cemented tibial tray impaction, and can also be helpful for impaction of other components such as ankle

PRODUCT NO'S:

1129
Dimensions: 7" x 4" (17,8 cm x 10,2 cm)
Delrin Impactor Pad: 1" x .625" (2,5 cm x 1,6 cm)

Replacement Part:

1129-02 [Replacement Pad Only]



ISO 13485:2016

FREE TRIAL ON MOST INSTRUMENTS

Scan to
Launch Our
Website



103 Estus Drive, Savannah, GA 31404
www.innomed.net info@innomed.net

912.236.0000 Phone
912.236.7766 Fax

Innomed-Europe Tel. +41 41 740 67 74
Fax +41 41 740 67 71

INNOMED

1.800.548.2362