

# Stanton Forward Retractors

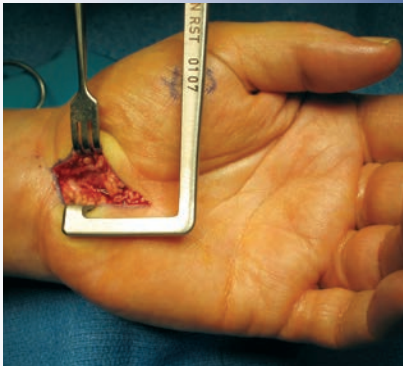
Designed by John L. Stanton, MD, FACS

*Designed to work as "tissue pushers", helping to enhance exposure by allowing the surgeon or an assistant to push forward the opposite side of the wound while retracting (or not) the nearer side*

Helps the assistant to hold the wound open without becoming fatigued and having to reach around to the opposite side of the wound to use another retractor.



Shallow Forward Ragnell



Shallow Forward Senn



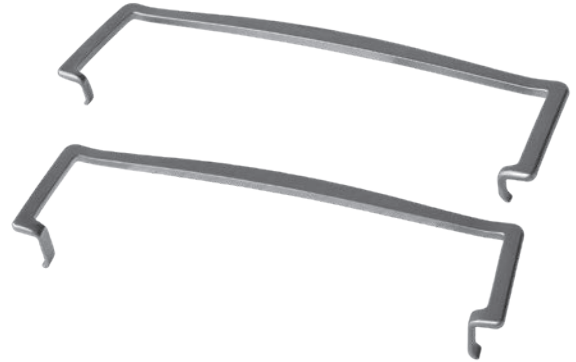
Deep Forward Senn without Teeth

## Stanton Forward Ragnell Retractors

### PRODUCT NO'S:

4510-01 [Shallow]  
Overall Length: 6.25" (15,9cm)  
Blade Offset: 1.625" (4,1cm)  
Blade Width: 3.1mm  
Blade Depth: 13mm

4510-02 [Deep]  
Overall Length: 6.25" (15,9cm)  
Blade Offset: 1.625" (4,1cm)  
Blade Width: 3.1mm  
Blade Depth: 19mm

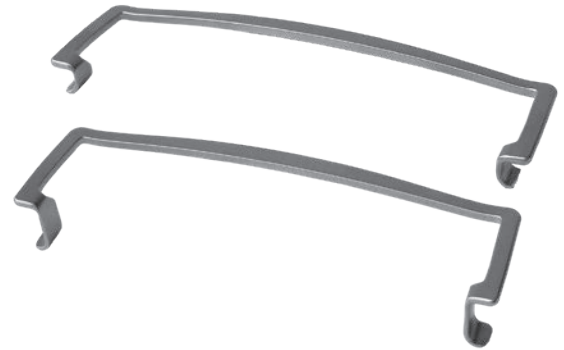


## Stanton Forward Senn Retractors

### PRODUCT NO'S:

4520 [Shallow w/Teeth]

4525-02 [Deep]  
Overall Length: 6.25" (15,9cm)  
Blade Offset: 1.625" (4,1cm)  
Blade Width: 9.5mm  
Blade Depth: 19mm



## Stanton Forward Rake Retractors

### PRODUCT NO'S:

4514-01 [Shallow]  
Overall Length: 6.25" (15,9cm)  
Blade Offset: 1.625" (4,1cm)  
Blade Width: 5.1mm  
Blade Depth: 10mm

4514-02 [Deep]  
Overall Length: 6.25" (15,9cm)  
Blade Offset: 1.625" (4,1cm)  
Blade Width: 5.1mm  
Blade Depth: 17mm



Scan to  
Launch Our  
Website



ISO 13485:2016

FREE TRIAL ON MOST INSTRUMENTS



103 Estus Drive, Savannah, GA 31404  
www.innomed.net info@innomed.net

912.236.0000 Phone  
912.236.7766 Fax

Innomed-Europe Tel. +41 41 740 67 74  
Fax +41 41 740 67 71

**INNOMED** 

1.800.548.2362