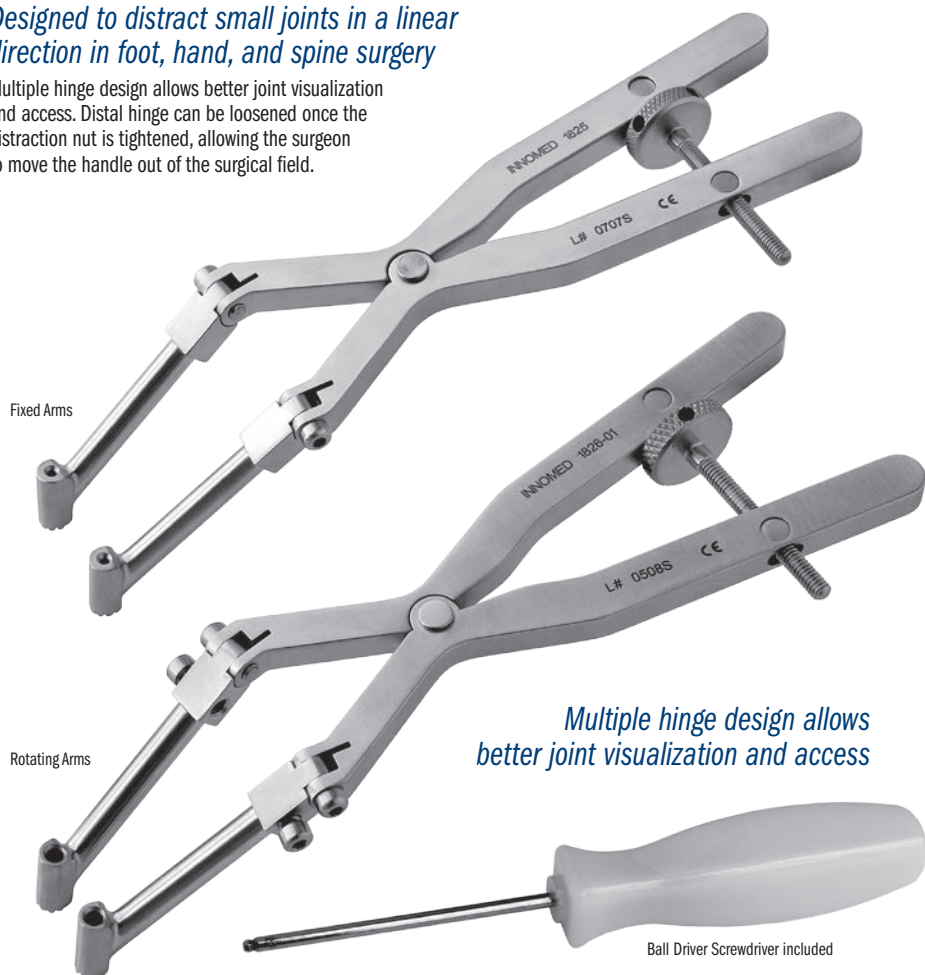
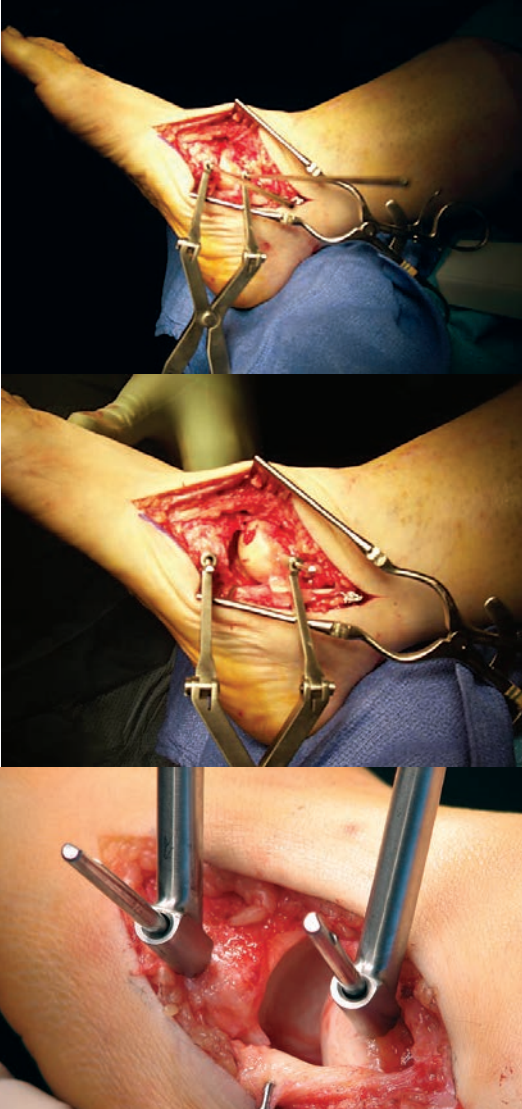


# Small Bone Compressor/Distractor

Designed by Richard Wittcock, DPM and Robert Baglio, DPM

*Designed to distract small joints in a linear direction in foot, hand, and spine surgery*

Multiple hinge design allows better joint visualization and access. Distal hinge can be loosened once the distraction nut is tightened, allowing the surgeon to move the handle out of the surgical field.



Fixed Arms

Rotating Arms

*Multiple hinge design allows better joint visualization and access*

Ball Driver Screwdriver included

MADE EXCLUSIVELY FOR INNOMED IN GERMANY

## PRODUCT NO'S:

### Fixed Arms

Overall Length (Flat): 7.5" (19,1 cm)  
Arm Length: 2.25" (5,7 cm)

1825 Up to .062" (1,6 mm) Pin Diameter

1826 Up to .125" (3,2 mm) Pin Diameter

### Rotating Arms

Overall Length (Flat): 7.5" (19,1 cm)  
Arm Length: 2.25" (5,7 cm)

1825-01 Up to .062" (1,6 mm) Pin Diameter

1826-01 Up to .125" (3,2 mm) Pin Diameter

### Included with All Models:

1025\* [Sterilization Case]

1825-BD [Ball Driver Screwdriver]



## PRODUCT NO'S:

### Packages of 10:

1270 [1/8" Smooth]  
Diameter: 3,2 mm (.125")  
Overall Length: 70 mm  
Shoulder-to-tip: 45 mm

1271 [1/16" Smooth]  
Diameter: 1,6 mm (.062")  
Overall Length: 70 mm  
Shoulder-to-tip: 45 mm

1297 [1/8" Threaded]  
Diameter: 3,2 mm (.125")  
Overall Length: 55 mm

## Shouldered Pin Retractors

Designed by M. Jake Hamer, MD

*Useful in fracture and reconstructive cases*

Can be used for opening wedge osteotomies, obtaining length or distraction to correct a foreshortened malunion, or in trauma cases (calcaneus fractures, tibial plateau fractures, pilon fractures). With three different length shouldered pins, the retractor can be set at different depths to provide the necessary retraction and/or distraction.

Can be used with the 1826 and 1826-01 Compressor/Distractors, and any other compressor and/or distractor that can accept 1/8" (3,2 mm) pins.

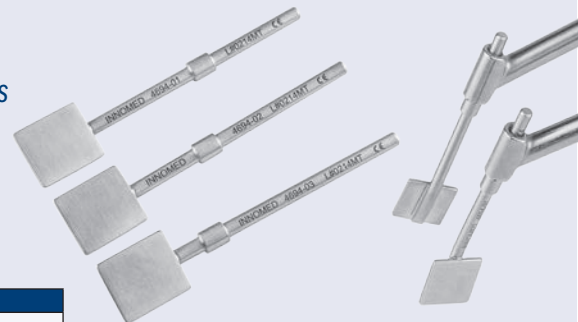
## PRODUCT NO'S:

### Sold In Pairs

4694-01 [Long]  
Overall Length: 67 mm  
End-to-shoulder: 22 mm  
Pad: 13mm x 15mm

4694-02 [Medium]  
Overall Length: 67 mm  
End-to-shoulder: 31 mm  
Pad: 13 mm x 15 mm

4694-03 [Short]  
Overall Length: 67 mm  
End-to-shoulder: 40 mm  
Pad: 13 mm x 15 mm



## Shouldered Bone Pins

For use with the Small Bone Compressor/Distractors, pins feature a trocar point

ISO 9001:2008 • ISO 13485:2003

FREE TRIAL ON MOST INSTRUMENTS

Scan to Launch Our Website



**INNOMED**



103 Estus Drive, Savannah, GA 31404  
www.innomed.net info@innomed.net

912.236.0000 Phone  
912.236.7766 Fax

Innomed-Europe Tel. +41 41 740 67 74  
Fax +41 41 740 67 71

1.800.548.2362