

Scott Patella Resection Guide/Clamp

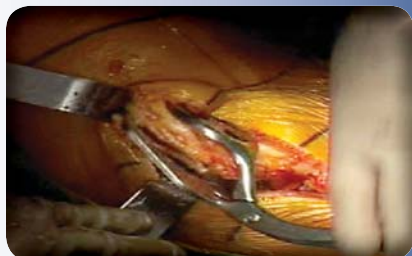
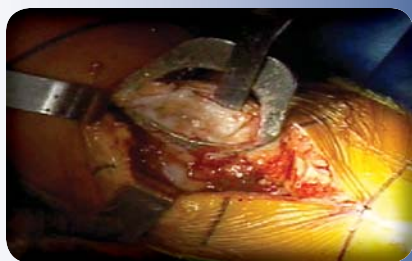
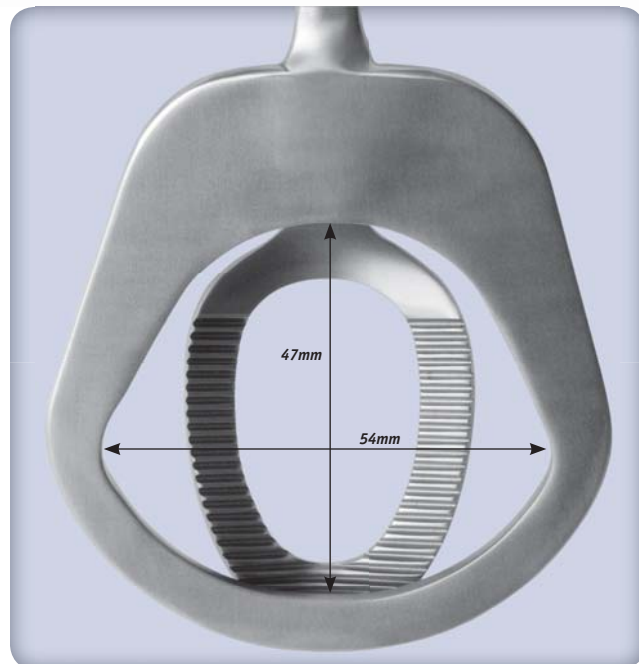
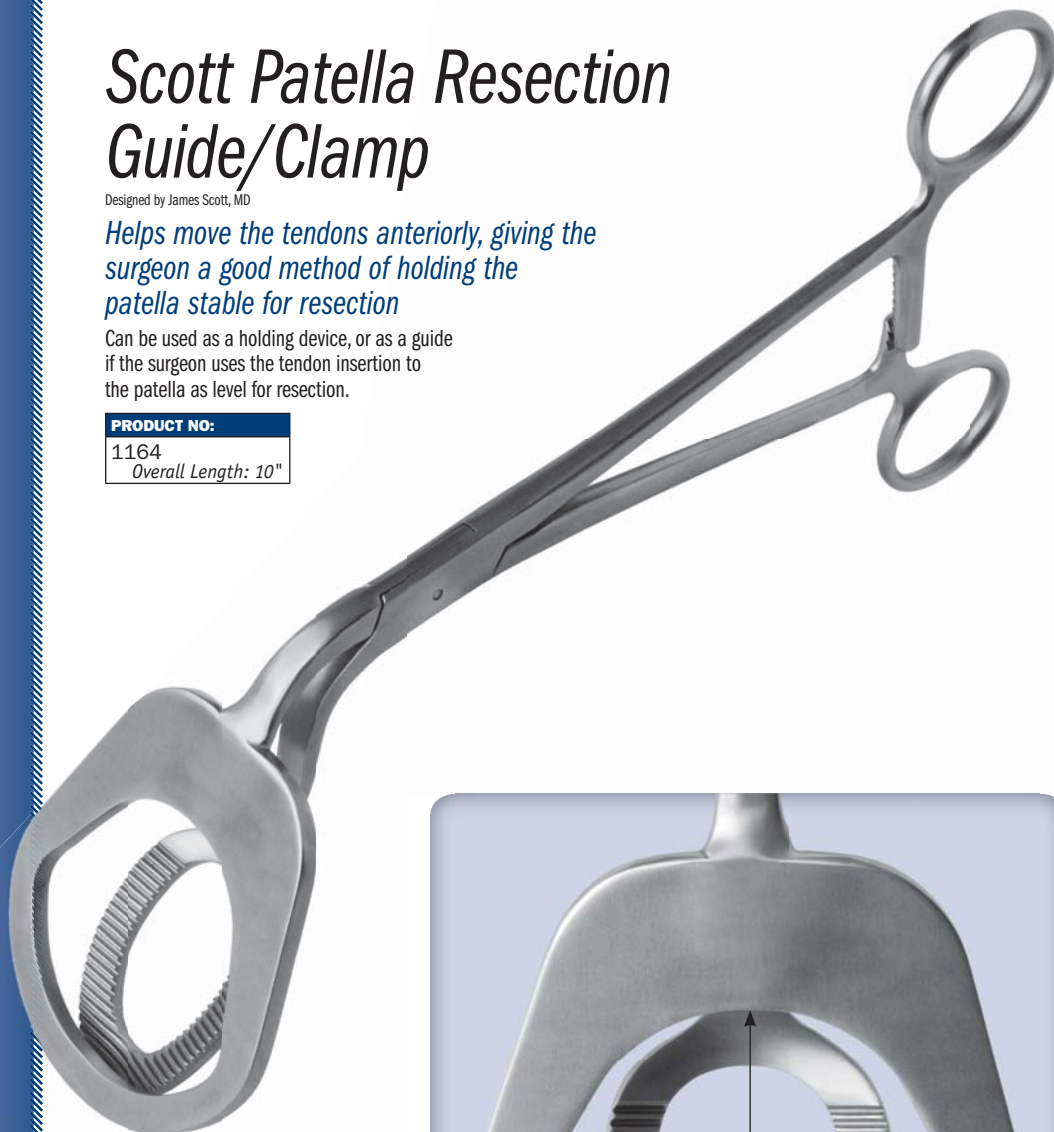
Designed by James Scott, MD

Helps move the tendons anteriorly, giving the surgeon a good method of holding the patella stable for resection

Can be used as a holding device, or as a guide if the surgeon uses the tendon insertion to the patella as level for resection.

PRODUCT NO:

1164
Overall Length: 10"



FREE TRIAL ON MOST INSTRUMENTS



103 Estus Drive, Savannah, GA 31404
www.innomed.net info@innomed.net

912.236.0000 Phone
912.236.7766 Fax



INNOMED

1.800.548.2362