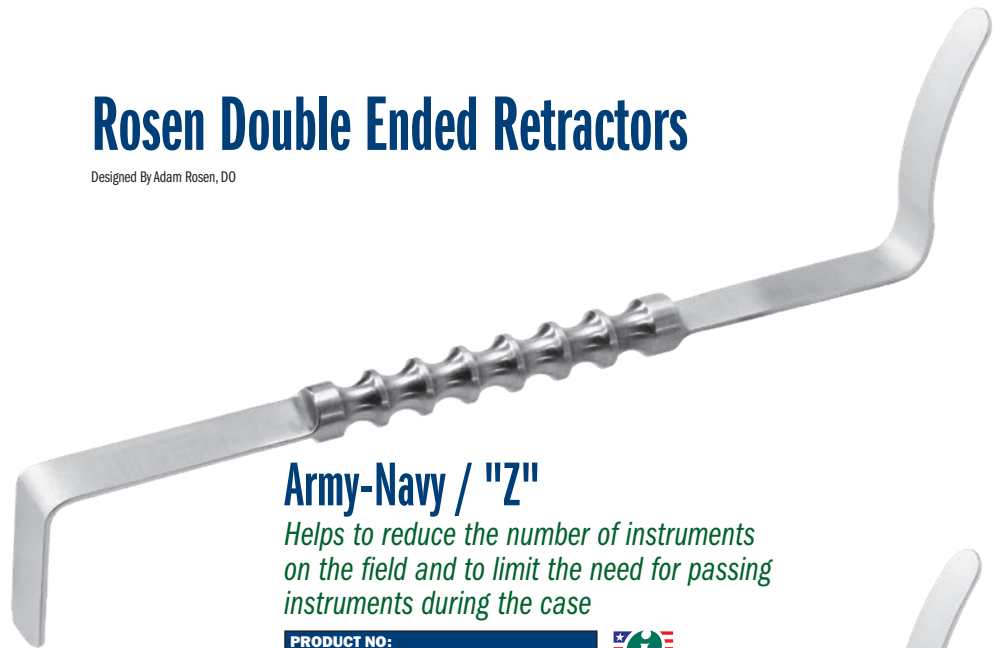
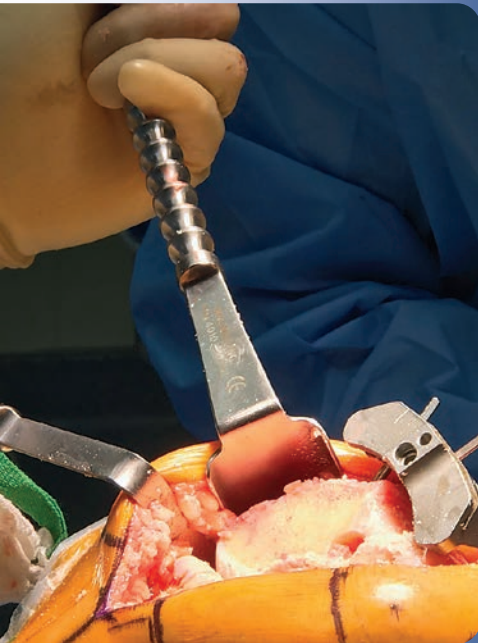
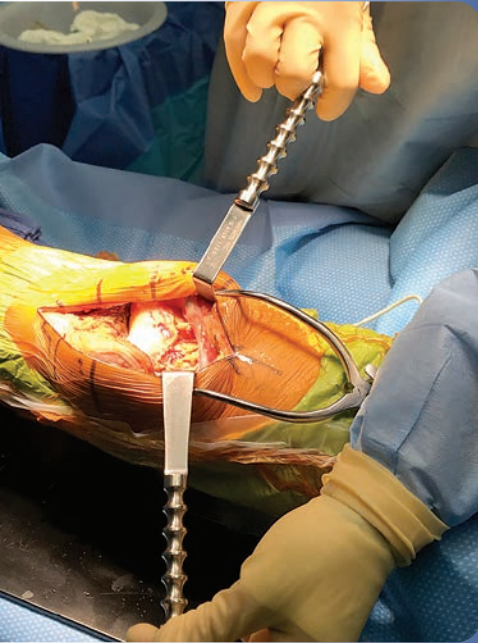


Rosen Double Ended Retractors

Designed By Adam Rosen, DO



Army-Navy / "Z"

Helps to reduce the number of instruments on the field and to limit the need for passing instruments during the case

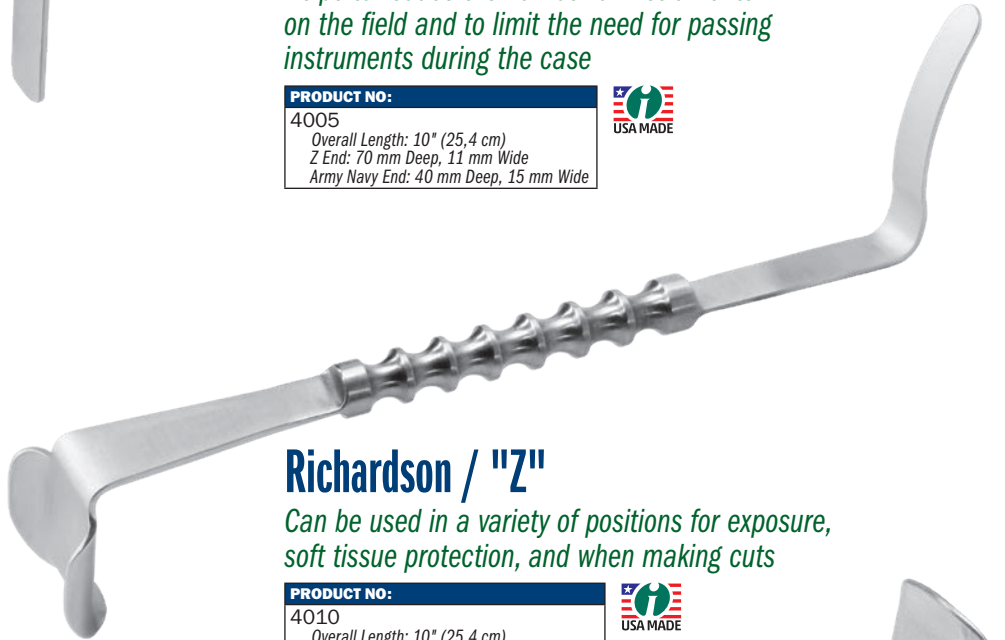
PRODUCT NO:

4005

Overall Length: 10" (25,4 cm)

Z End: 70 mm Deep, 11 mm Wide

Army Navy End: 40 mm Deep, 15 mm Wide



Richardson / "Z"

Can be used in a variety of positions for exposure, soft tissue protection, and when making cuts

PRODUCT NO:

4010

Overall Length: 10" (25,4 cm)

Z End: 70 mm Deep, 11 mm Wide

Richardson End: 40 mm Deep, 37 mm Wide



Richardson / Richardson

Designed to help with exposure and soft tissue protection

PRODUCT NO:

4010-01

Overall Length: 10" (25,4 cm)

Large End: 41 mm x 40 mm

Small End: 38 mm x 38 mm



www.innomed.net

ISO 13485:2016

FREE TRIAL ON MOST INSTRUMENTS



103 Estus Drive, Savannah, GA 31404
info@innomed.net

912.236.0000 Phone
912.236.7766 Fax

Innomed-Europe Tel. +41 41 740 67 74
info@innomed-europe.com

INNOMED

1.800.548.2362