



# Redler Wrist Bone Clamp with Wire Guide

Designed by M.R. Redler, MD

*Designed to hold bony fragments in place for placement of guide wires*

**PRODUCT NO'S:**

**1885-45**

For Pins up to .045" (1,1 mm)  
Overall Length: 9.5" (24,1 cm)  
Jaw opens to: 3.5" (8,9 cm)

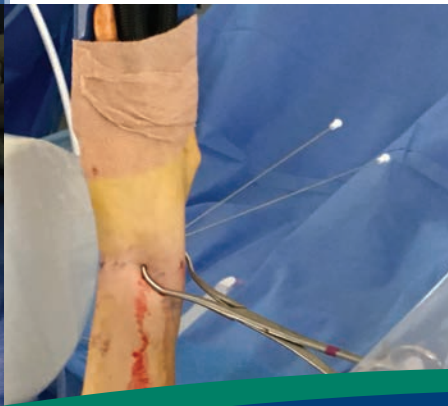
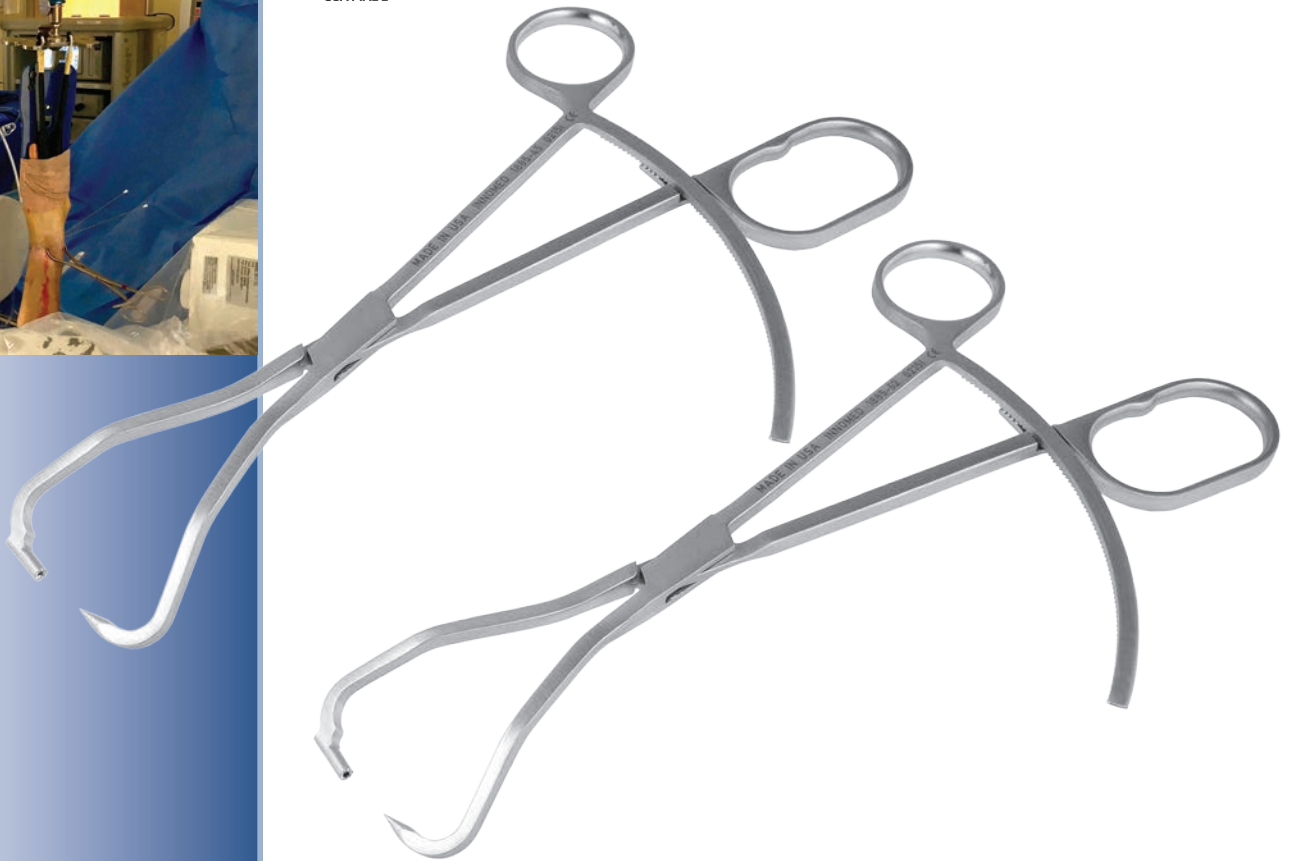
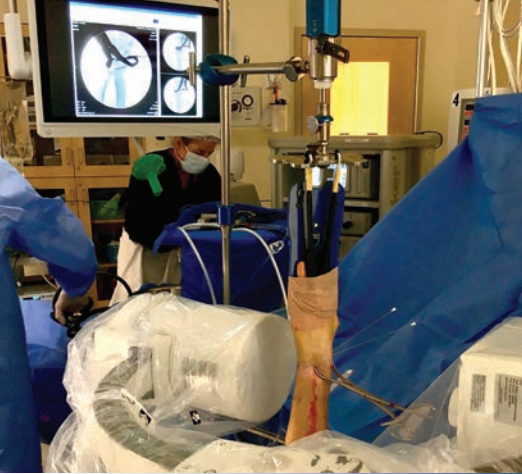
**1885-62**

For Pins up to .062" (1,6 mm)  
Overall Length: 9.5" (24,1 cm)  
Jaw opens to: 3.5" (8,9 cm)

Can be used for:

- ▶ Placement of pins across distal radius fractures or across carpal bones
- ▶ Arthroscopically assisted fixation in the wrist
- ▶ Fracture fragments about the elbow
- ▶ Placement of guide wires during the open reduction and internal fixation of a patella fracture

Available for use with 0.045 or 0.062 K-wires (1,1 mm or 1,6 mm).



ISO 9001:2008 • ISO 13485:2003

**FREE TRIAL ON MOST INSTRUMENTS**

Scan to  
Launch Our  
Website



# INNOMED



103 Estus Drive, Savannah, GA 31404  
www.innomed.net info@innomed.net

912.236.0000 Phone  
912.236.7766 Fax

Innomed-Europe Tel. +41 41 740 67 74  
Fax +41 41 740 67 71

**1.800.548.2362**