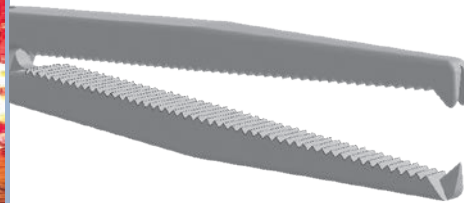




# Powers Modified Kocher Clamp

Designed by Mark Powers, MD

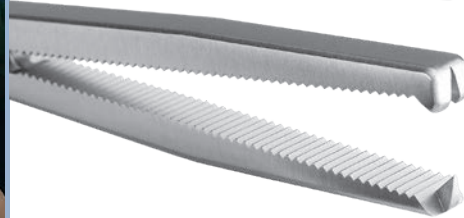
*Heavier design allows for a firmer grasping of bone and soft tissues*



*Tapered Jaw*



*Tapered Narrow Jaw*



*Square Jaw*



PRODUCT NO'S:	
1813 [Tapered Jaw]	Overall Length: 8.25" (21 cm) Jaw Length: 2.5" (6,4 cm) Jaw at End: 5.2 mm x 4.1 mm
1813-01 [Tapered Narrow Jaw]	Overall Length: 8.25" (21 cm) Jaw Length: 2.5" (6,4 cm) Jaw at End: 5.2 mm x 3 mm
1814 [Square Jaw]	Overall Length: 8.25" (21 cm) Jaw Length: 2.5" (6,4 cm) Jaw at End: 6.5 mm x 5 mm

ISO 13485:2016

**FREE TRIAL ON MOST INSTRUMENTS**

Scan to  
Launch Our  
Website



103 Estus Drive, Savannah, GA 31404  
www.innomed.net info@innomed.net

912.236.0000 Phone  
912.236.7766 Fax

Innomed-Europe Tel. +41 41 740 67 74  
Fax +41 41 740 67 71

**INNOMED**

**1.800.548.2362**