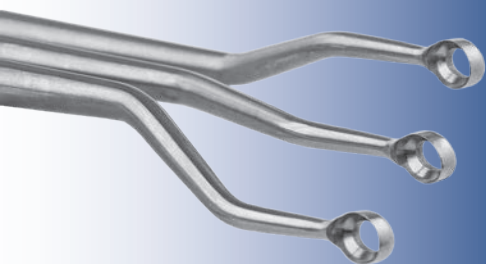


Powers Double Bent Curette Set

Designed by Mark Powers, MD

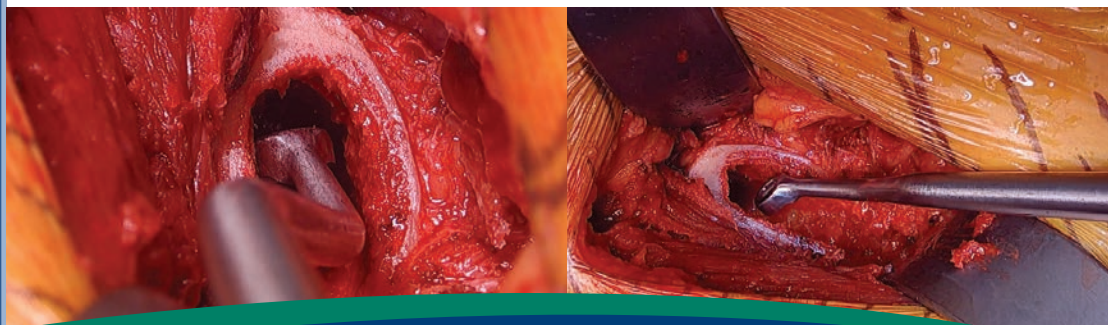
The bayonet curettes help allow for proper lateralization and seating of the broach



PRODUCT NO'S:
5190-00 [Set of Three]
Also available individually:
5190-L [Angled Left] Overall Length: 16.875" (42,9 cm) Handle Length: 9" (22,9 cm) Shaft Length Before Bend: 5.25" (13,3 cm) Bend Offset: .5" (1,3 cm) Curette Cup Angle: 33° Curette Cup Inner Dimensions: 6 mm X 8,7 mm

5190-R [Angled Right] Overall Length: 16.875" (42,9 cm) Handle Length: 9" (22,9 cm) Shaft Length Before Bend: 5.25" (13,3 cm) Bend Offset: .5" (1,3 cm) Curette Cup Angle: 33° Curette Cup Inner Dimensions: 6 mm X 8,7 mm

5190-S [Straight] Overall Length: 17" (43,2 cm) Handle Length: 9" (22,9 cm) Shaft Length Before Bend: 5.25" (13,3 cm) Bend Offset: .5" (1,3 cm) Curette Cup Angle: 33° Curette Cup Inner Dimensions: 6 mm X 8,7 mm



ISO 13485:2016

FREE TRIAL ON MOST INSTRUMENTS

Scan to
Launch Our
Website



INNOMED



103 Estus Drive, Savannah, GA 31404
www.innomed.net info@innomed.net

912.236.0000 Phone
912.236.7766 Fax

Innomed-Europe Tel. +41 41 740 67 74
Fax +41 41 740 67 71

1.800.548.2362

© 2018 Innomed, Inc.