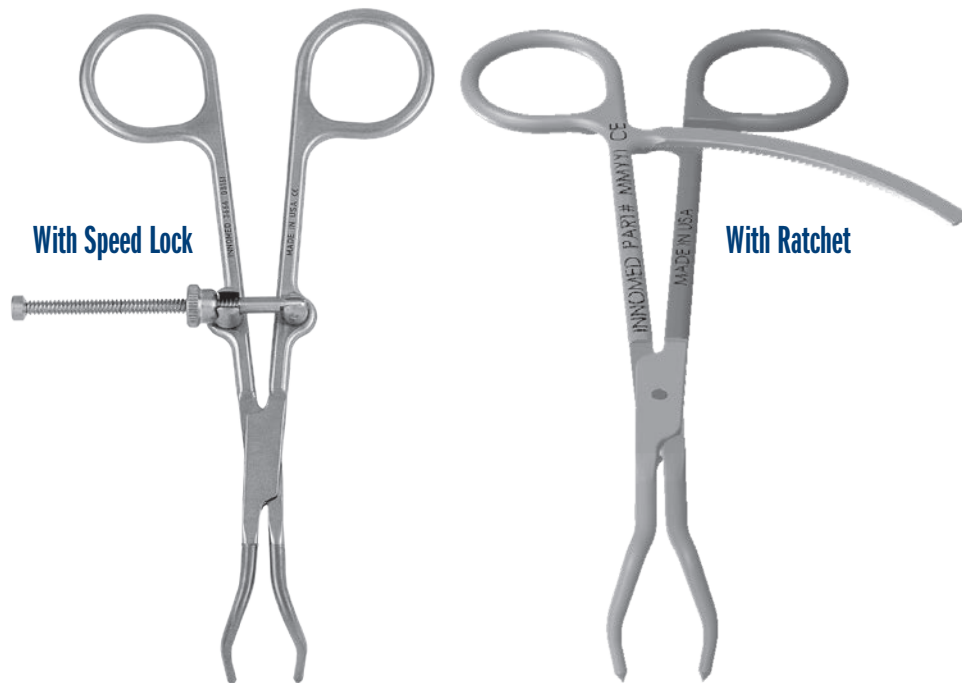


Pointed Fracture Reduction Clamps

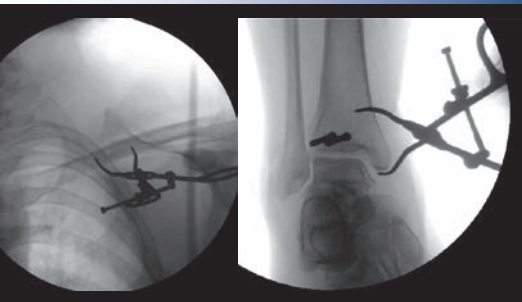
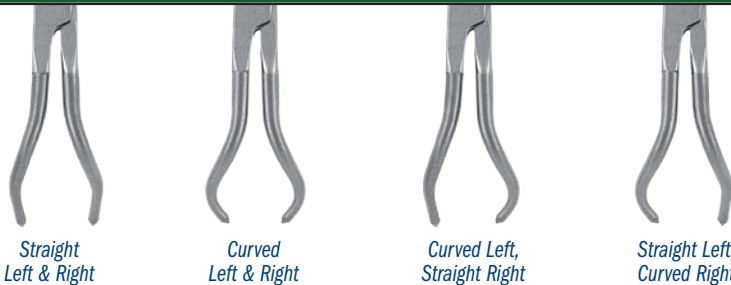
Designed by Reza Firoozabadi, MD MA

Versatile set of fracture reduction clamps, each with a specific tine design that allows for appropriate vector placement so that anatomic reduction can be obtained in a number of different types of fractures

- ▶ 1.9 mm tines allow for a snug fit in 2 mm drill holes
- ▶ Tines angled to prevent clamp "slippage" with compression
- ▶ Straight tines can be placed deep within bone which allows for far cortex compression.
- ▶ Clamps incorporate a box joint design that prevents clamp joint loosening and the need for tightening.
- ▶ Example applications: any transverse fracture (straight-straight clamp), both bone forearm fractures, olecranon fractures, medial malleolus fractures, and many more.
- ▶ Speed Lock Style: Extra-long spin down allows for increased range of clamp use, and open-topped joint rotates to allow for increased range of opening, and also allows for quick release



Two styles – Speed Lock and Ratchet – each available in four tine configurations



Straight Left & Right

Curved Left, Straight Right

PRODUCT NO'S:
WITH SPEED LOCK MECHANISM
3666 [Straight Left & Right] Overall Length: 5.5" (14 cm)
3667 [Curved Left & Right] Overall Length: 5.5" (14 cm)
3666-L [Curved Left, Straight Right] Overall Length: 5.5" (14 cm)
3666-R [Straight Left, Curved Right] Overall Length: 5.5" (14 cm)

PRODUCT NO'S:
WITH RATCHET MECHANISM
3668 [Straight Left & Right] Overall Length: 5.5" (14 cm)
3669 [Curved Left & Right] Overall Length: 5.5" (14 cm)
3668-L [Curved Left, Straight Right] Overall Length: 5.5" (14 cm)
3668-R [Straight Left, Curved Right] Overall Length: 5.5" (14 cm)



ISO 9001:2008 • ISO 13485:2003

FREE TRIAL ON MOST INSTRUMENTS

Scan to Launch Our Website



INNOMED



103 Estus Drive, Savannah, GA 31404
www.innomed.net info@innomed.net

912.236.0000 Phone
912.236.7766 Fax

Innomed-Europe Tel. +41 41 740 67 74
Fax +41 41 740 67 71

1.800.548.2362

© 2017 Innomed, Inc.