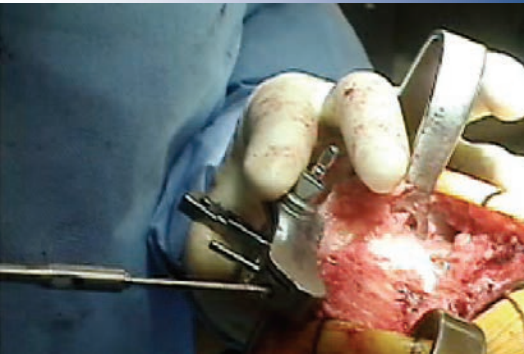


Pin Driver and Threaded Bone Pins



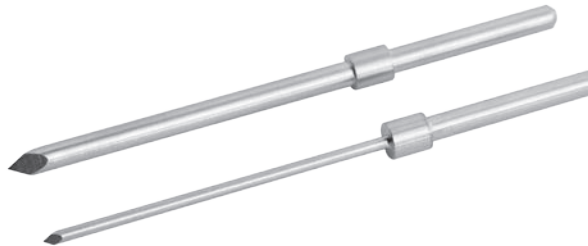
Quick-connect version for use with a driver.

| PRODUCT NO'S: |
|---|
| 1205 [Pin Driver] Overall Length: 3.75" |
| 1206 [Pin Driver w/Zimmer Hall Quick-connect] Overall Length: 5" |
| 1/8" (3.2mm) Pins – Packages of 10: |
| 1287 [85mm Threaded Bone Pin] |
| 1290 [65mm Threaded Bone Pin] |
| 1297 [55mm Threaded Bone Pin with Collar] |
| 8248 [Fixed Driver with Zimmer Hall Quick-connect] Overall Length: 5.75" (15,6 cm) Handle Width: 4.625" (11,6 cm) |



Fixed Driver
with Zimmer Hall
Quick-connect

Shouldered Bone Pins



| PRODUCT NO'S: |
|--|
| Packages of 10: |
| 1270 [70mm with Trochar Point] Diameter: 3.2mm (1/8") (.125") Overall Length: 70mm Shoulder-to-tip: 45mm |
| 1271 [70mm with Trochar Point] Diameter: 1.6mm (1/16") (.062") Overall Length: 70mm Shoulder-to-tip: 45mm |

ISO 9001:2008 • ISO 13485:2003

FREE TRIAL ON MOST INSTRUMENTS

Scan to
Launch Our
Website



INNOMED 



103 Estus Drive, Savannah, GA 31404
www.innomed.net info@innomed.net

912.236.0000 Phone
912.236.7766 Fax

Innomed-Europe Tel. +41 41 740 67 74
Fax +41 41 740 67 71

1.800.548.2362