

Paulos Osteo Wedges

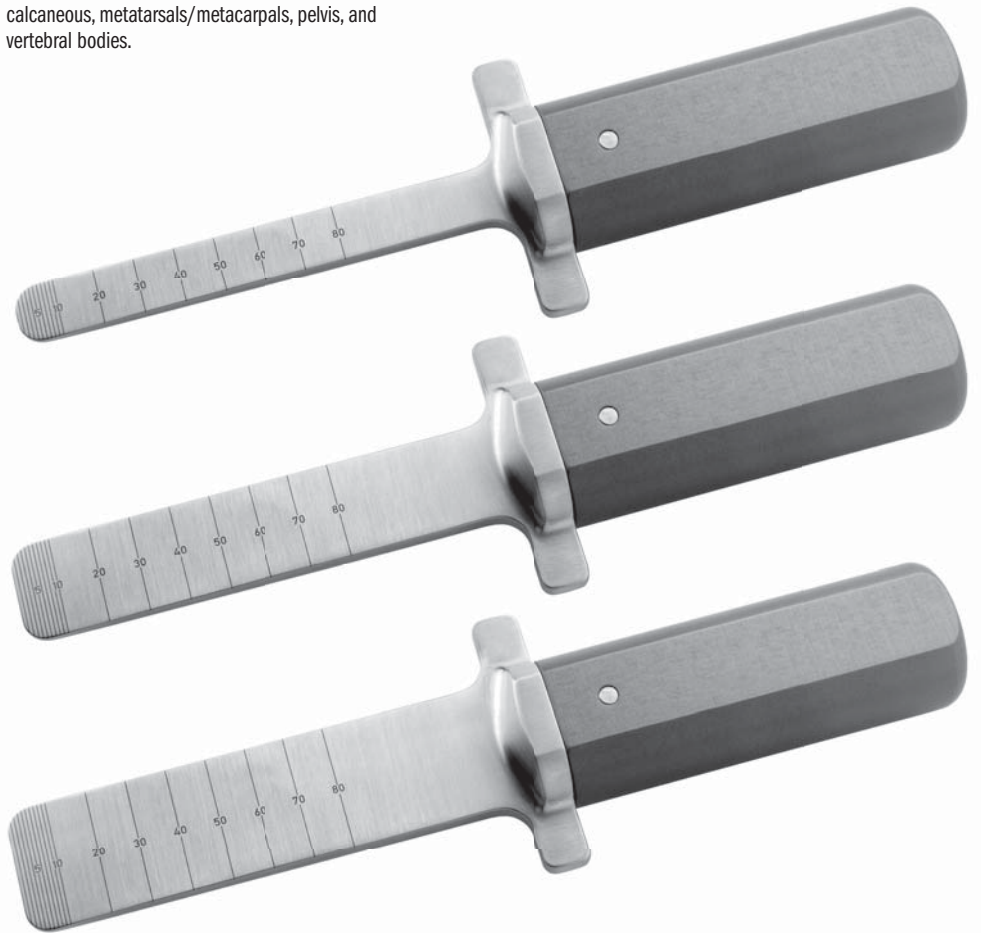
Designed by Lonnie E. Paulos, MD

Designed to help cut and separate bone segments for angular corrections of long bones

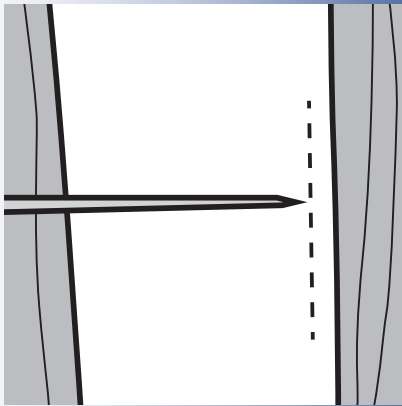
After an initial bone cut has been made with a saw blade or sharp osteotome—but before penetrating through it—the osteo wedges can be used to help complete the bone cut through the opposite cortex by splitting the bone.

If the osteo wedges do penetrate, they are blunt and rounded, helping to prevent damage to the soft tissues and other structures contiguous to the bone cortex.

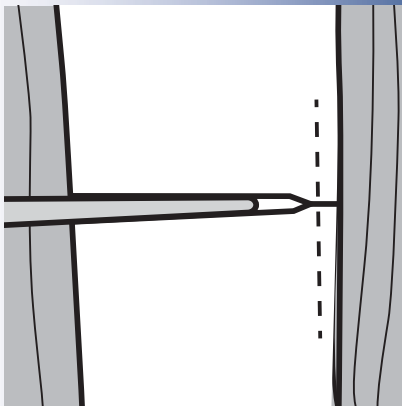
The osteo wedges can be used anytime both cortices of a bone are osteotomized. Helpful when correcting mal-unions, growth deformities, collecting bone graft material, etc. Can be used on the femur, tibia, humerus, clavicle, calcaneus, metatarsals/metacarpals, pelvis, and vertebral bodies.



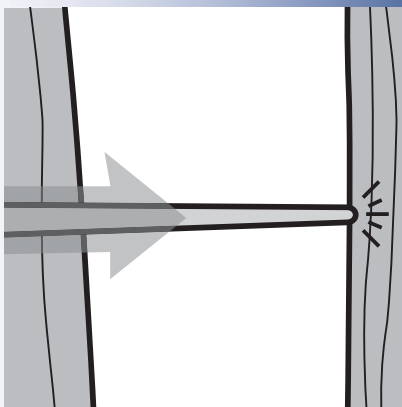
PRODUCT NO.'S:	
6425-01 [Small]	Overall Length: 9.375" (23,8cm) Blade Width: 13.9mm
6425-02 [Medium]	Overall Length: 9.375" (23,8cm) Blade Width: 25.1mm
6425-03 [Large]	Overall Length: 9.375" (23,8cm) Blade Width: 37.8mm



The initial bone cut is made with a saw blade or sharp osteotome



An osteo wedge can then be used to help complete the bone cut through the opposite cortex by splitting the bone



If the osteo wedge does penetrate, it is blunt and rounded, helping to prevent damage to the soft tissues and other contiguous structures

ISO 9001:2008 • ISO 13485:2003

FREE TRIAL ON MOST INSTRUMENTS



103 Estus Drive, Savannah, GA 31404
www.innomed.net info@innomed.net

912.236.0000 Phone
912.236.7766 Fax

Scan to
Launch Our
Website



Innomed-Europe Tel. +41 41 740 67 74
Fax +41 41 740 67 71

INNOMED

1.800.548.2362