

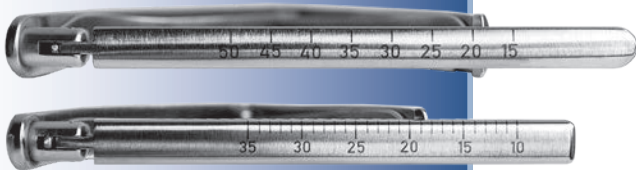
Ortho Self-Retaining Retractors

Calibrated ratchet is used to accurately measure the size of opening – useful in procedures to help assess bone graft needs

- ▶ Features a no-teeth design, available with flat or serrated outside blades
- ▶ Also useful in knee replacement surgery to separate the femur and tibia, where the calibrated design can be used to help balance ligaments
- ▶ Also useful in foot & ankle surgery



Calibrated ratchet helps assess bone graft needs



PRODUCT NO'S:	
Flat Outside Pads	Serrated Outside Pads
1842 [Small Flat] Overall Length: 6.5" (16,5 cm) Blade Width: 7 mm Blade Thickness: 1.68 mm	1842-01 [Small Serrated] Overall Length: 6.5" (16,5 cm) Blade Width: 7 mm Blade Thickness: 1.68 mm
1843 [Medium Flat] Overall Length: 9.25" (23,5 cm) Blade Width: 10 mm Blade Thickness: 1.68 mm	1843-01 [Medium Serrated] Overall Length: 9.25" (23,5 cm) Blade Width: 10 mm Blade Thickness: 1.68 mm



ISO 13485:2016

Scan to
Launch Our
Website



FREE TRIAL ON MOST INSTRUMENTS

INNOMED



103 Estus Drive, Savannah, GA 31404
www.innomed.net info@innomed.net

912.236.0000 Phone
912.236.7766 Fax

Innomed-Europe Tel. +41 41 740 67 74
Fax +41 41 740 67 71

1.800.548.2362