

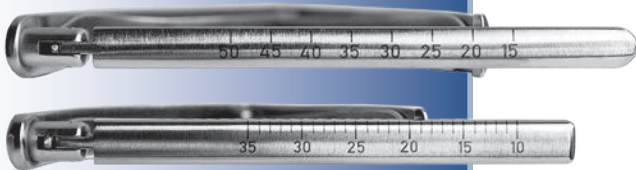
# Ortho Self-Retaining Retractors

*Used to separate the femur and tibia during knee replacement procedures, where the calibrated design can help to balance ligaments*

- ▶ Features a no-teeth design, available with flat or serrated outside blades
- ▶ Can also be used for spine surgery where the calibrated ratchet can be used to help accurately measure the size of an opening - useful in procedures to help assess bone graft needs
- ▶ Also useful in foot & ankle surgery



*Calibrated ratchet (in mm) is helpful in ligament balancing.*



PRODUCT NO'S:	
Flat Outside Pads	Serrated Outside Pads
1842 [Small Flat] Overall Length: 6.5" (16,5 cm) Blade Width: 7 mm Blade Thickness: 1.68 mm	1842-01 [Small Serrated] Overall Length: 6.5" (16,5 cm) Blade Width: 7 mm Blade Thickness: 1.68 mm
1843 [Medium Flat] Overall Length: 9.25" (23,5 cm) Blade Width: 10 mm Blade Thickness: 1.68 mm	1843-01 [Medium Serrated] Overall Length: 9.25" (23,5 cm) Blade Width: 10 mm Blade Thickness: 1.68 mm



ISO 13485:2016

**FREE TRIAL ON MOST INSTRUMENTS**

Scan to  
Launch Our  
Website



**INNOMED**



103 Estus Drive, Savannah, GA 31404  
www.innomed.net info@innomed.net

912.236.0000 Phone  
912.236.7766 Fax

Innomed-Europe Tel. +41 41 740 67 74  
Fax +41 41 740 67 71

**1.800.548.2362**