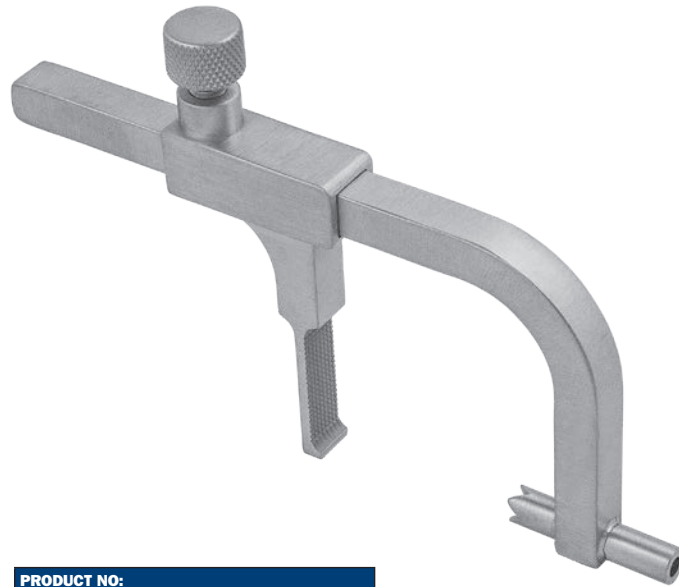


# Mogul K-Wire/Pin Insertion Guide

Designed by Stuart J. Mogul, DPM, FACFAS

*A guide designed for passing guide pins or k-wires through two adjacent metatarsal bones*



**PRODUCT NO:**

3017  
 Dimensions: 2.375" Tall x 3.75" Wide (6 x 9,5 cm)  
 Maximum Pin Diameter: 3/32" (2,4 mm)  
 Maximum Clamped Opening: 2" (5,1 cm)  
 Minimum Clamped Opening: .375" (1 cm)  
 Pin/K-Wire Guide Length: .925" (23,5 mm)



ISO 13485:2016

**FREE TRIAL ON MOST INSTRUMENTS**

Scan to  
Launch Our  
Website



103 Estus Drive, Savannah, GA 31404  
 www.innomed.net info@innomed.net

912.236.0000 Phone  
 912.236.7766 Fax

Innomed-Europe Tel. +41 41 740 67 74  
 Fax +41 41 740 67 71

**1.800.548.2362**