

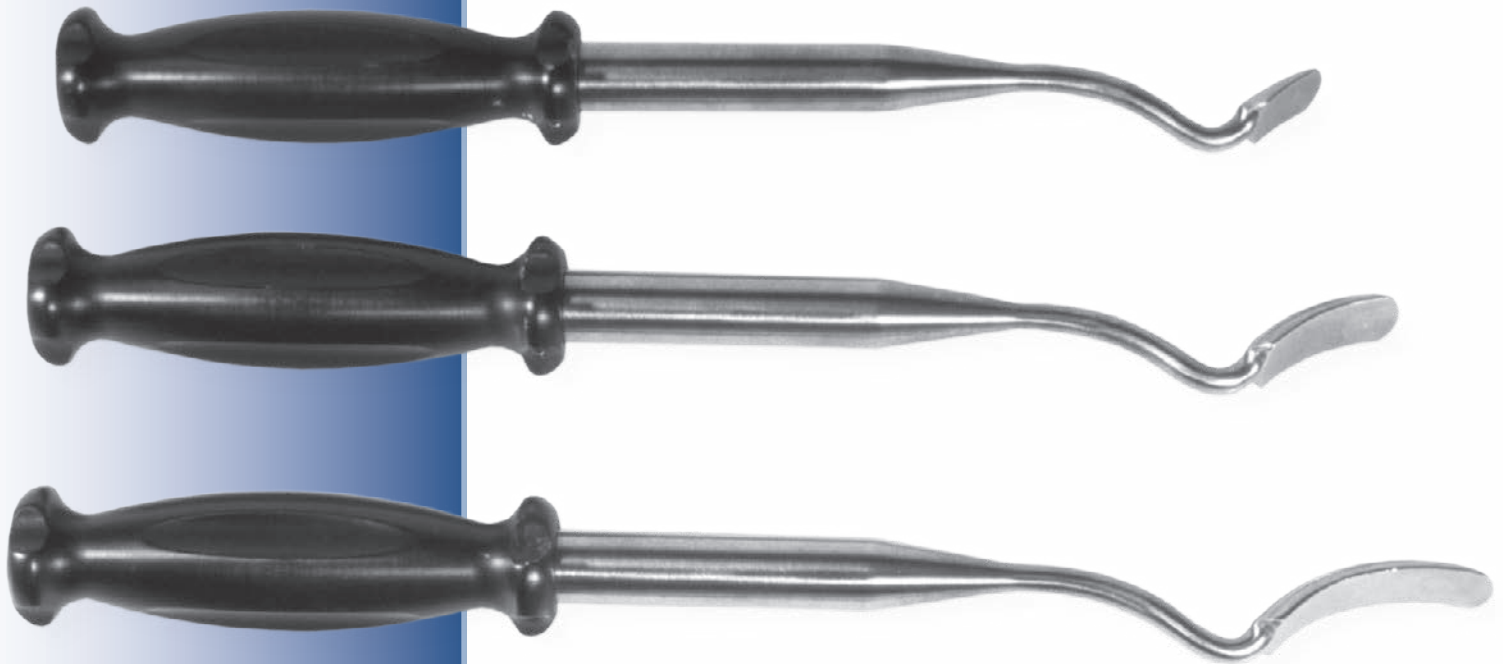


Modified Smith-Peterson Style Osteotomes for Acetabular Cup Removal

Designed by Merrill Ritter, MD

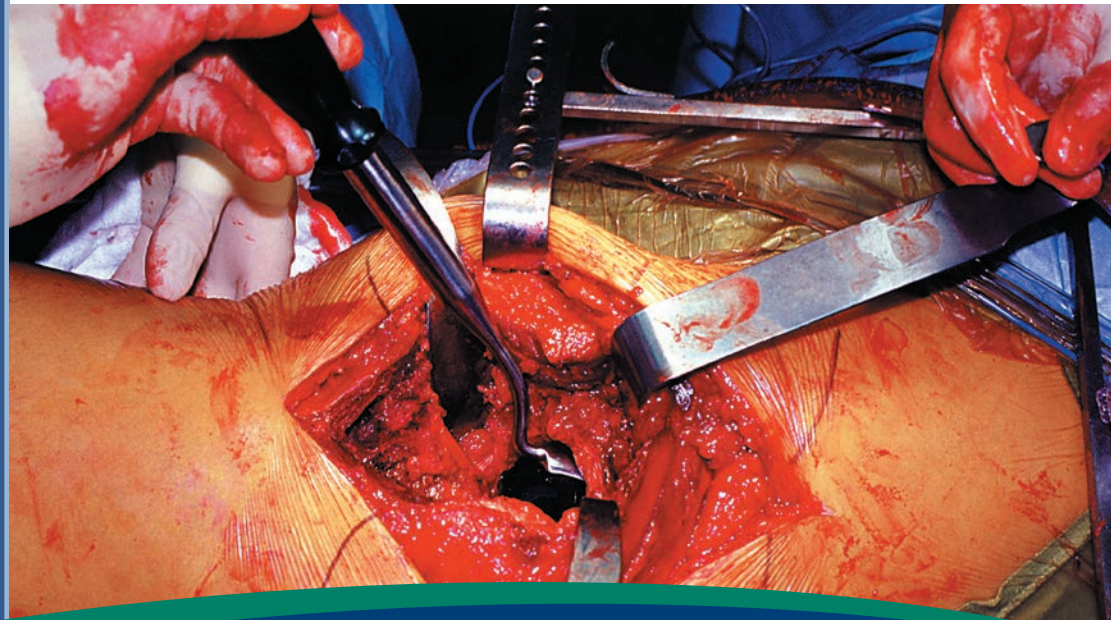
Multi-arch osteotomes help in removal of total hip cups

For removal of total hip cups, the different curvatures help to fit next to a cups outer surface. The osteotomes have a handle for better control, plus a hammering platform end.



PRODUCT NO'S:

- 5280-01 [Short]
Blade Dimensions: 20 mm x 20 mm
Overall Length: 10.875" (27.6 cm)
Handle Length: 5" (12.7 cm)
- 5280-02 [Medium]
Blade Dimensions: 20 mm x 35 mm
Overall Length: 11.675" (29.6 cm)
Handle Length: 5" (12.7 cm)
- 5280-03 [Long]
Blade Dimensions: 20 mm x 50 mm
Overall Length: 12.25" (31.1 cm)
Handle Length: 5" (12.7 cm)



ISO 13485:2016

FREE TRIAL ON MOST INSTRUMENTS

Scan to
Launch Our
Website



INNOMED



103 Estus Drive, Savannah, GA 31404
www.innomed.net info@innomed.net

912.236.0000 Phone
912.236.7766 Fax

Innomed-Europe Tel. +41 41 740 67 74
Fax +41 41 740 67 71

1.800.548.2362