

Medial Malleolar/Bone Fragment Clamps

Designed by Edward L. Schlambert, MD

Quick tightening & release low profile clamp with unlimited settings

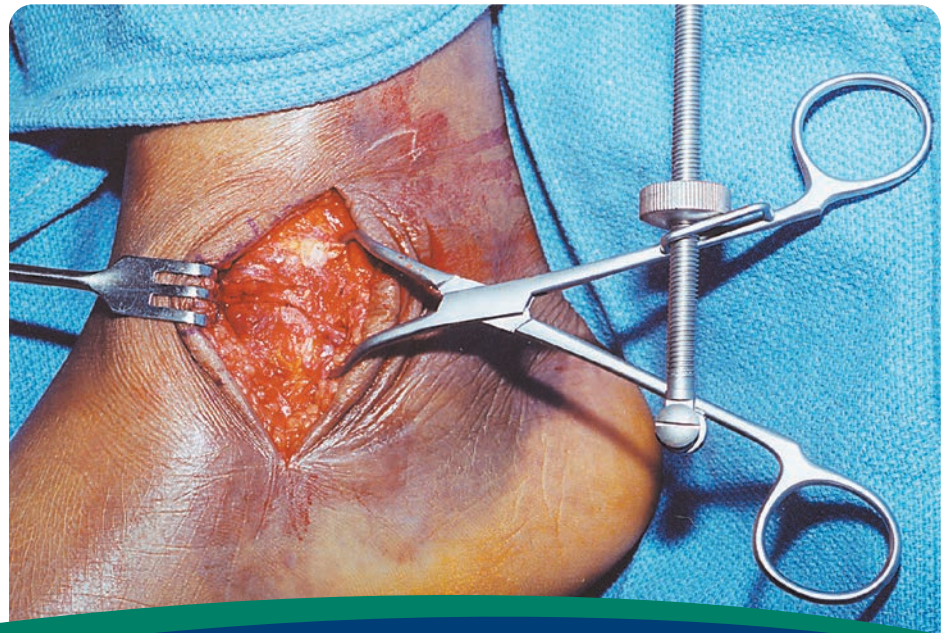
PRODUCT NO'S:

1830 [Standard]
Overall Length: 5.5" (14 cm)
Clamp End Length: 1" (2.54 cm)

1835 [Medium]
Overall Length: 6" (15.2 cm)
Clamp End Length: 2" (5.1 cm)

1840 [Large]
Overall Length: 8" (20.3 cm)
Clamp End Length: 3" (7.6 cm)

MADE EXCLUSIVELY
FOR INNOMED IN
GERMANY



www.innomed.net

ISO 13485:2016

FREE TRIAL ON MOST INSTRUMENTS

INNOMED



103 Estus Drive, Savannah, GA 31404
info@innomed.net

912.236.0000 Phone
912.236.7766 Fax

Innomed-Europe Tel. +41 41 740 67 74
info@innomed-europe.com

1.800.548.2362

© 2023 Innomed, Inc.