

McMahon Posterior Femoral Retractor

Designed by Steve McMahon, MD

Used in the posterior approach to lift the proximal femur

After exposing the lesser trochanter, the distal lip of the retractor hooks under the psoas tendon in close contact to the bone. The adjacent tip of the body of the retractor sits under the calcar. The combined action lifts the proximal femur and the body of the retractor creates a space in which to prepare the proximal femur. The handle is bent twice at 30° to move the assistant's hand out of the way.

PRODUCT NO'S:

6443-01 [Left]

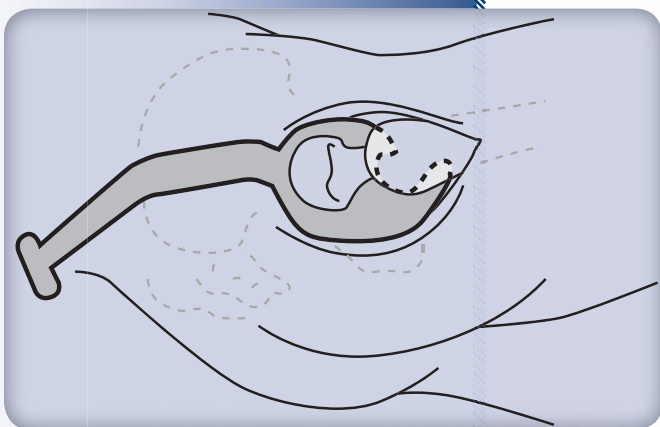
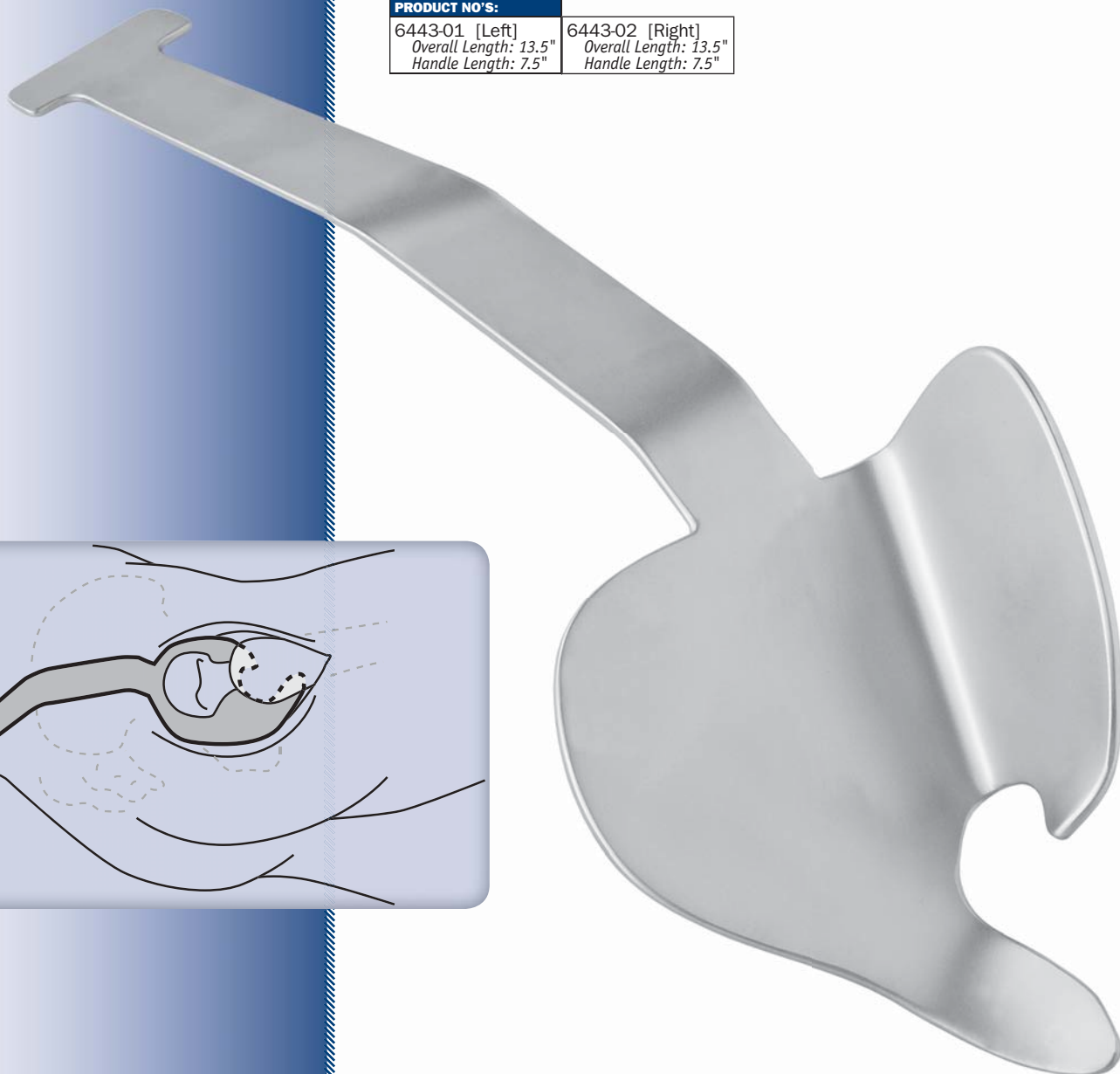
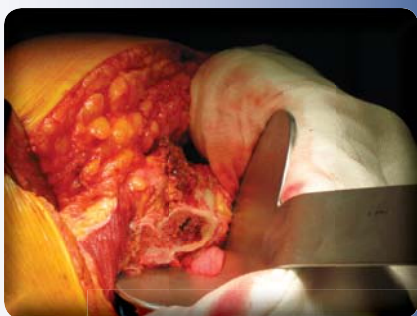
Overall Length: 13.5"

Handle Length: 7.5"

6443-02 [Right]

Overall Length: 13.5"

Handle Length: 7.5"



FREE TRIAL ON MOST INSTRUMENTS



103 Estus Drive, Savannah, GA 31404
www.innomed.net info@innomed.net

912.236.0000 Phone
912.236.7766 Fax



INNOMED

1.800.548.2362