

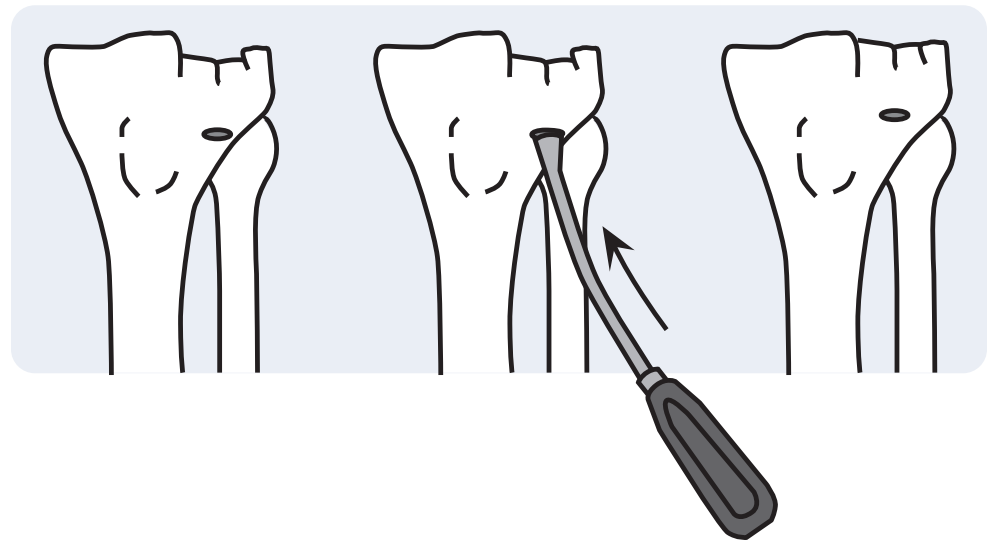
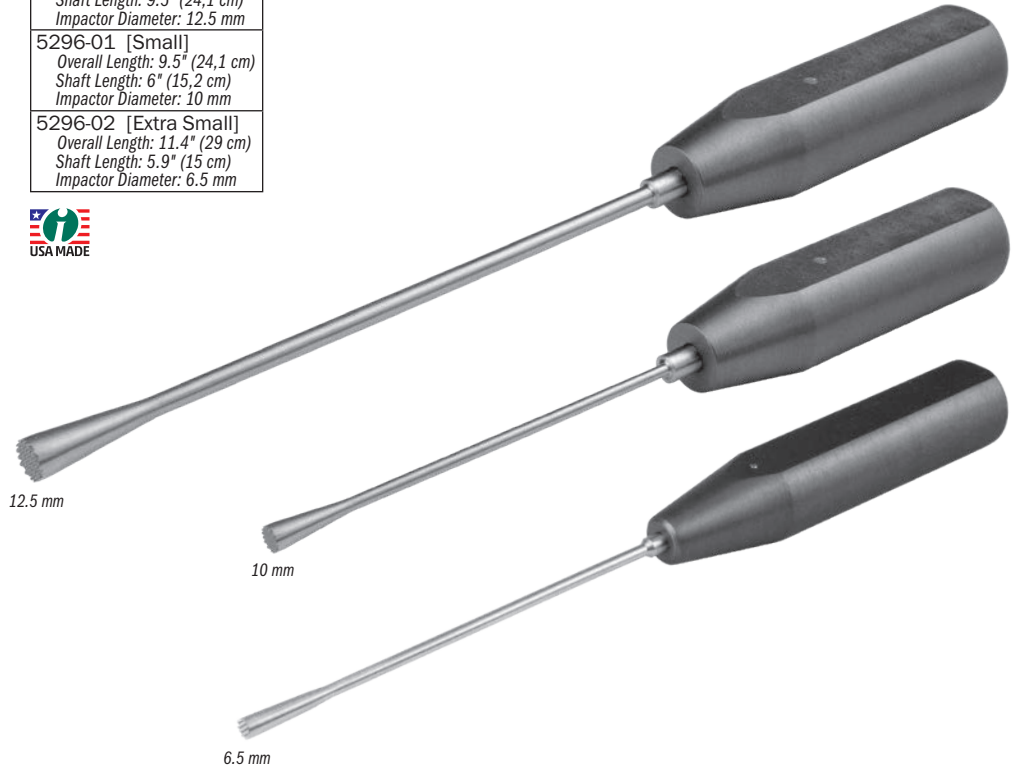
Malleable shaft can be contoured for different angles

# Malleable Bone Tamps

Designed by Serge Kaska, MD. Extra small version modified by Amal Das, MD.

The large tamp is designed to help elevate a depressed tibial plateau fracture, while the small tamp can help elevate a depressed tibial plateau and smaller tibial plateau fractures

PRODUCT NO'S:	
5296 [Large]	Overall Length: 14" (35,6 cm) Shaft Length: 9.5" (24,1 cm) Impactor Diameter: 12.5 mm
5296-01 [Small]	Overall Length: 9.5" (24,1 cm) Shaft Length: 6" (15,2 cm) Impactor Diameter: 10 mm
5296-02 [Extra Small]	Overall Length: 11.4" (29 cm) Shaft Length: 5.9" (15 cm) Impactor Diameter: 6.5 mm



ISO 13485:2016

FREE TRIAL ON MOST INSTRUMENTS

# INNOMED



103 Estus Drive, Savannah, GA 31404  
www.innomed.net info@innomed.net

912.236.0000 Phone  
912.236.7766 Fax

Innomed-Europe Tel. +41 41 740 67 74  
Fax +41 41 740 67 71

1.800.548.2362