



Now Available with
Diamond Cut Pads

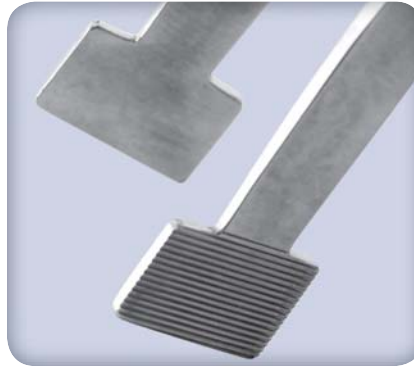
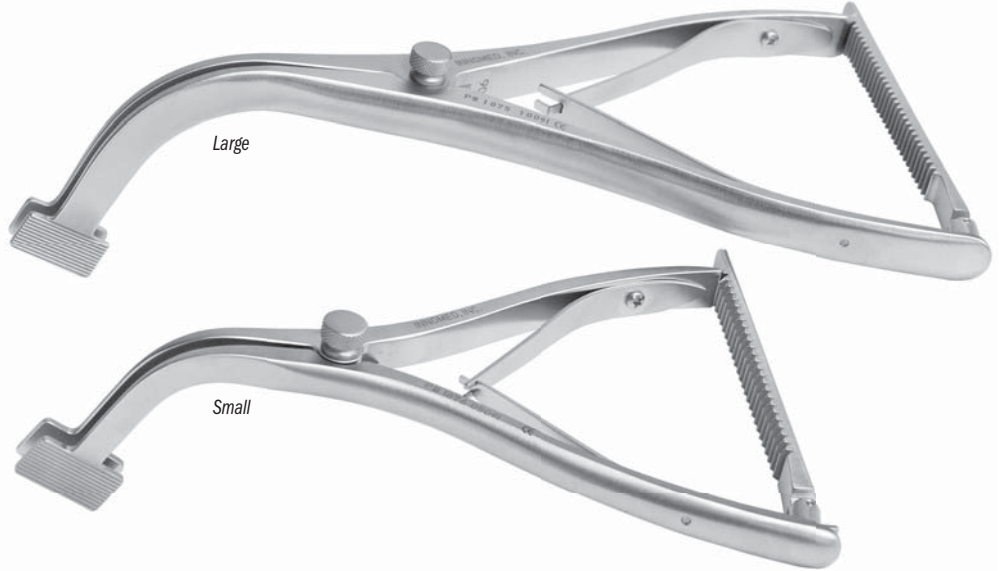
Lombardi Femoral Tibial Spreader

Designed by Adolph V. Lombardi Jr., MD

Thin pads help to separate the femur and tibia during total knee procedures

PRODUCT NO'S:

Horizontal Grooved Pads	Diamond Cut Pads
1875 [Large] Overall Length: 9.25" Pads: 22mm x 13mm Opens to 50mm	1875-D [Large] Overall Length: 9.25" Pads: 22mm x 13mm Opens to 50mm
1876 [Small] Overall Length: 7" Pads: 22mm x 13mm Opens to 35mm	1876-D [Small] Overall Length: 7" Pads: 22mm x 13mm Opens to 35mm



FREE TRIAL ON MOST INSTRUMENTS



103 Estus Drive, Savannah, GA 31404
www.innomed.net info@innomed.net

912.236.0000 Phone
912.236.7766 Fax



INNOMED

1.800.548.2362