

# Hooked Bone Awls

Designed by Reza Firoozabadi, MD

*"Shoulder hook" awls designed to help with manipulation of bone fragments for fixation*

**PRODUCT NO'S:**

5078 [Standard]  
Overall Length: 10.5" (26,7 cm)  
Handle Length: 5" (12,7 cm)

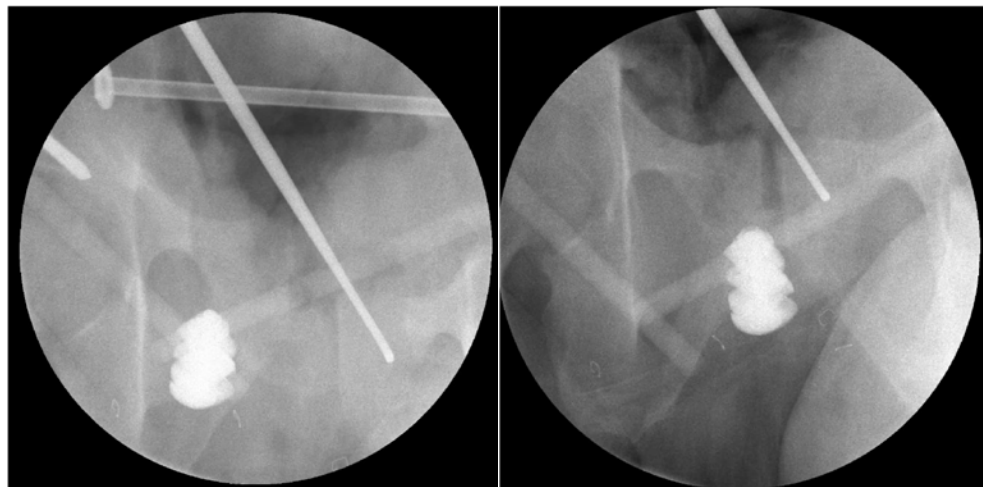
5078-01 [Long]  
Overall Length: 13.375" (34 cm)  
Handle Length: 6" (15,2 cm)



*Standard hooked bone awl being used to gain length to assist with reduction of a fibula fracture. A 2mm pilot hole is made to seat the tip of the bone awl.*



*Long hooked bone awl being used to lateralize proximal fragment, while spike pusher being used distally to medialize distal fragment. Of note the long hooked bone awl is used to minimize radiation to the surgeons hands.*



*Long hooked bone awl being used to assist with reduction of the pubic symphysis in the setting of a t-type acetabular fracture.*

ISO 13485:2016

**FREE TRIAL ON MOST INSTRUMENTS**

**INNOMED** <sup>®</sup>



103 Estus Drive, Savannah, GA 31404  
www.innomed.net info@innomed.net

912.236.0000 Phone  
912.236.7766 Fax

**Innomed-Europe** Tel. +41 41 740 67 74  
Fax +41 41 740 67 71

**1.800.548.2362**