

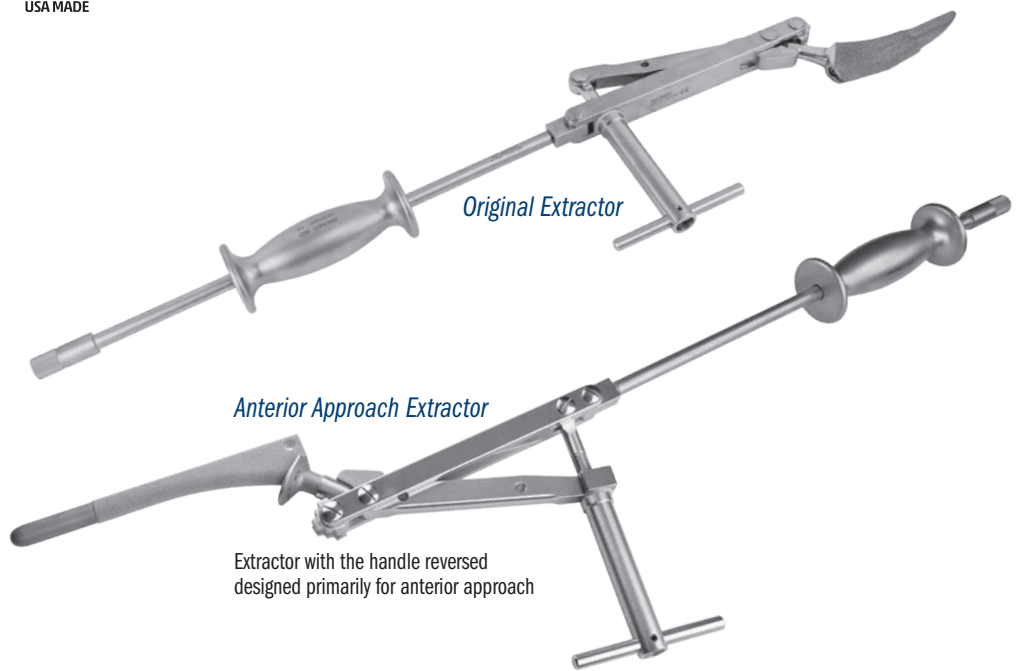
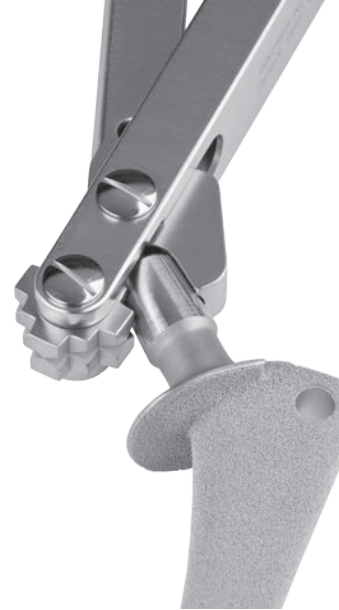
# Universal Modular Femoral Hip Component Extractors

*Helps remove a femoral hip stem after the modular head has been removed*

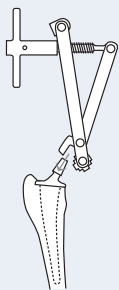
Designed to clamp onto the taper of a femoral hip stem after the modular head has been removed. The extractor is equipped with a swivel block for attachment of a slap hammer. The swivel block helps keep the slap hammer in line with the angle of the femoral stem. Includes standard slap hammer, #3925.

#### PRODUCT NO'S:

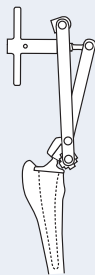
3610	[Original Extractor with Standard Slap Hammer #3925]
3610-R	[Anterior Approach Extractor with Standard Slap Hammer #3925]
<b>Optional/Individual Parts:</b>	
3610-01	[Original Extractor Only]
3610-R-01	[Anterior Approach Extractor Only]
3925	[Standard Slap Hammer] 3/8"-16 Thread Gauge
3935	[Extra Large Slap Hammer] 3/8"-16 Thread Gauge



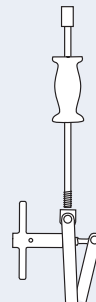
Extractor with the handle reversed designed primarily for anterior approach



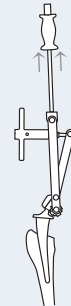
The extractor is opened to accommodate any size taper on a modular head total hip stem.



The taper is clamped between the rotating block and the taper anvil. Tightening the "T" handle holds a stem taper in place.



The slap hammer is screwed into the swivel block. The slap hammer can be aligned with the stem utilizing the swivel block.



Extraction is carried out by the slap hammer or by utilizing a mallet on the hammer flares of the slap hammer.

Handle will appear on the opposite side when using the anterior approach extractor.

ISO 9001:2008 • ISO 13485:2003

**FREE TRIAL ON MOST INSTRUMENTS**



103 Estus Drive, Savannah, GA 31404  
www.innomed.net info@innomed.net

912.236.0000 Phone  
912.236.7766 Fax

Scan to  
Launch Our  
Website



Innomed-Europe Tel. +41 41 740 67 74  
Fax +41 41 740 67 71

**INNOMED**

**1.800.548.2362**