

Harwin Modified Cobra Retractor

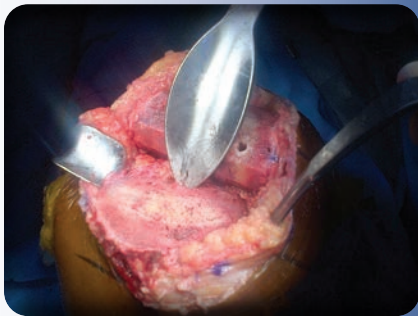
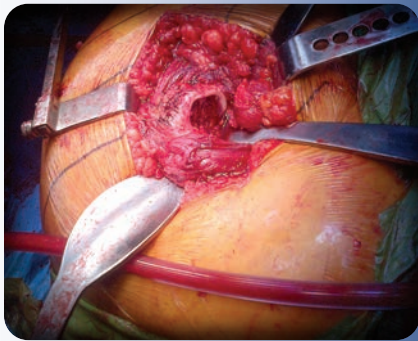
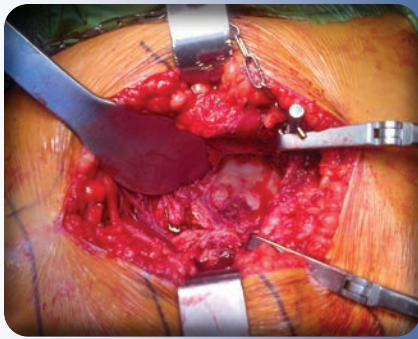
Designed by Steven F. Harwin, MD, FACS

Designed for use during total hip and knee surgery

The long handle and obtuse angle provide ergonomic leverage—especially helpful for use with obese patients.

In total hip surgery, the wide, concave blade design allows for enhanced exposure—especially useful in anterior hip surgery with the placement of reamers, and to elevate and expose the proximal femur.

In total knee surgery, the wide blade of the large retractor spans the prepared box and helps bring the tibia forward. The small retractor helps with retraction of the medial and lateral structures, where the wide, concave blade provides added exposure over standard bent Hohmann retractors. The serrated tip helps improve stability.



PRODUCT NO'S:

6143 [Large]
Overall Length: 14.75" (37,5 cm)
Blade Width: 43.2 mm
Tongue: 25 mm x 5 mm

6143-01 [Small]
Overall Length: 12.5" (31,8 cm)
Blade Width: 30 mm
Tongue: 25 mm x 5 mm

ISO 13485:2016

FREE TRIAL ON MOST INSTRUMENTS

INNOMED



103 Estus Drive, Savannah, GA 31404
info@innomed.net

912.236.0000 Phone
912.236.7766 Fax

Innomed-Europe Tel. +41 41 740 67 74
info@innomed-europe.com

1.800.548.2362