

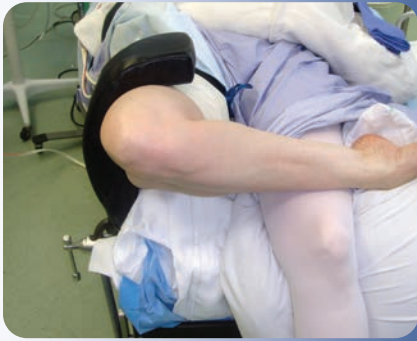
# George Arthroscopic Knee Positioner

Designed by Michael S. George, MD

*Provides lateral as well as superior support which allows valgus stress to open the medial compartment*

Shape does not squeeze the thigh, making the need for a thigh tourniquet optional. If desired, the unit can easily be rotated out of the way without disrupting the sterile field. Using with a standard operating table clamp, the unit can easily be raised or lowered to accommodate all thigh sizes.

<b>PRODUCT NO'S:</b>
2735
Overall Height: 22" (55,9 cm)
Post Height: 12" (30,5 cm)
Pad Width: 3" (7,6 cm)
<b>Replacement Parts</b>
2735-P [Pad]



[www.innomed.net](http://www.innomed.net)

ISO 13485:2016

FREE TRIAL ON MOST INSTRUMENTS

# INNOMED



103 Estus Drive, Savannah, GA 31404  
info@innomed.net

912.236.0000 Phone  
912.236.7766 Fax

Innomed-Europe Tel. +41 41 740 67 74  
info@innomed-europe.com

1.800.548.2362