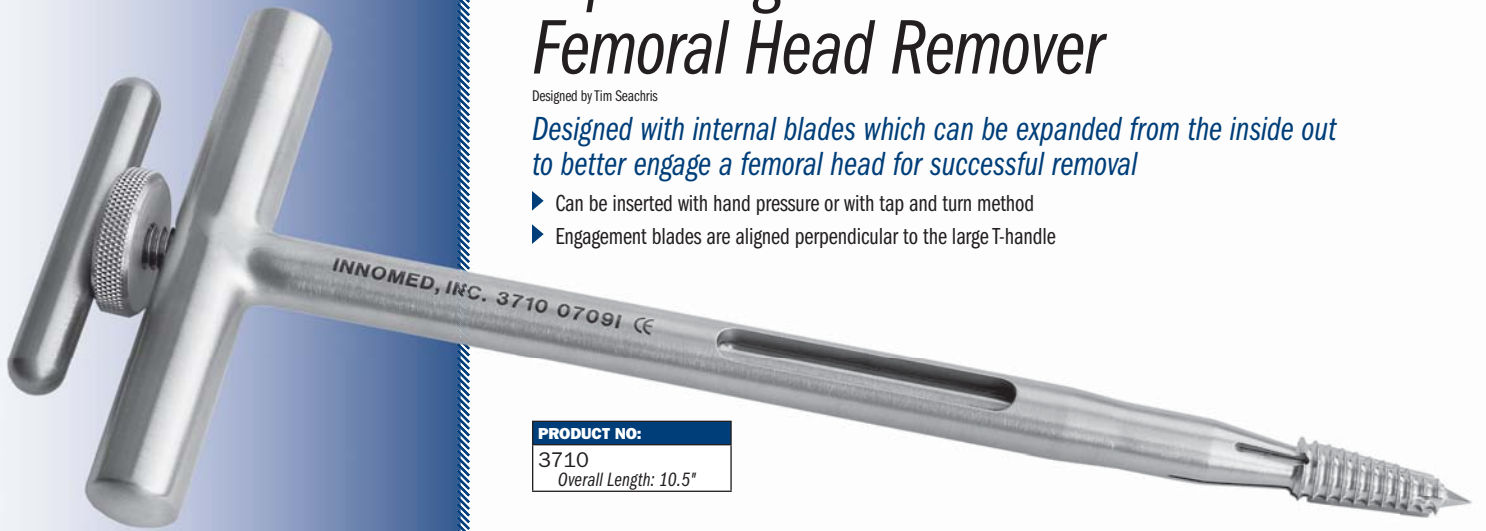


Expanding Cannulated Corkscrew Femoral Head Remover

Designed by Tim Seachris

Designed with internal blades which can be expanded from the inside out to better engage a femoral head for successful removal

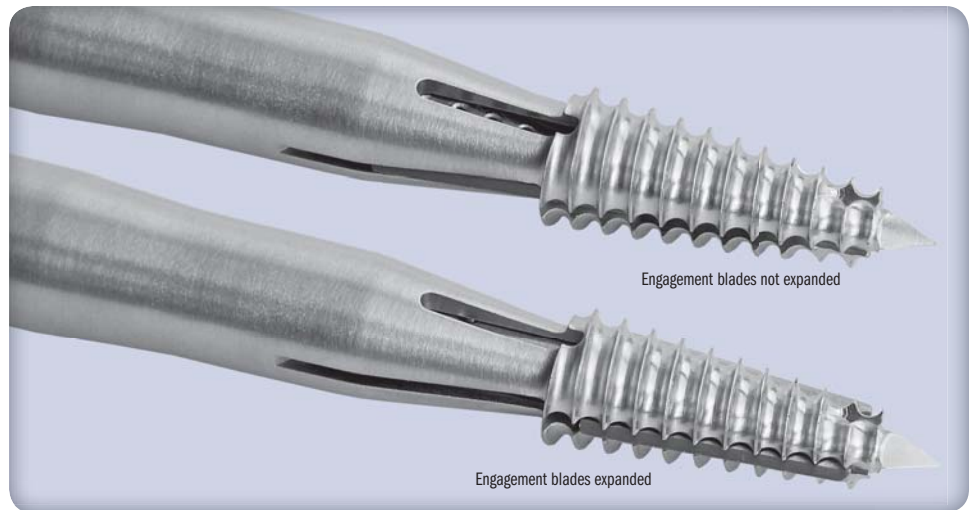
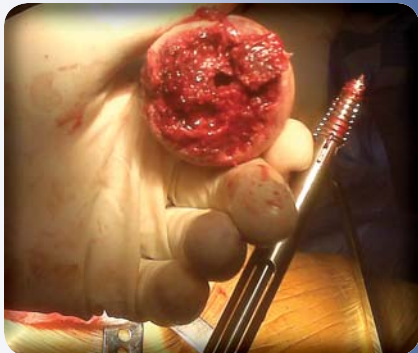
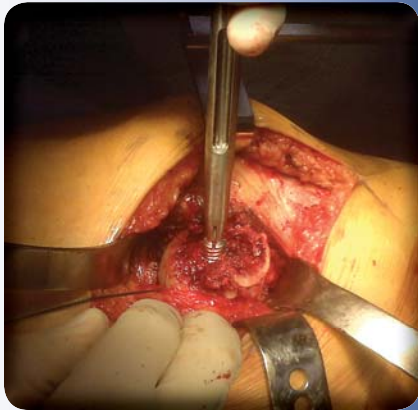
- ▶ Can be inserted with hand pressure or with tap and turn method
- ▶ Engagement blades are aligned perpendicular to the large T-handle



PRODUCT NO:

3710

Overall Length: 10.5"



FREE TRIAL ON MOST INSTRUMENTS



103 Estus Drive, Savannah, GA 31404
www.innomed.net info@innomed.net

912.236.0000 Phone
912.236.7766 Fax



INNOMED

1.800.548.2362