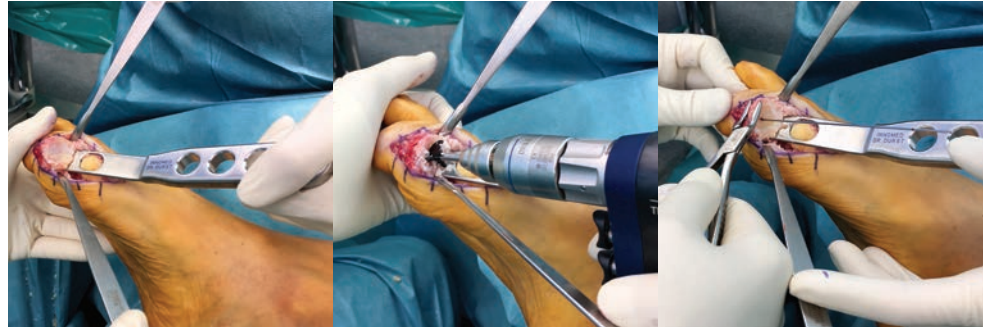


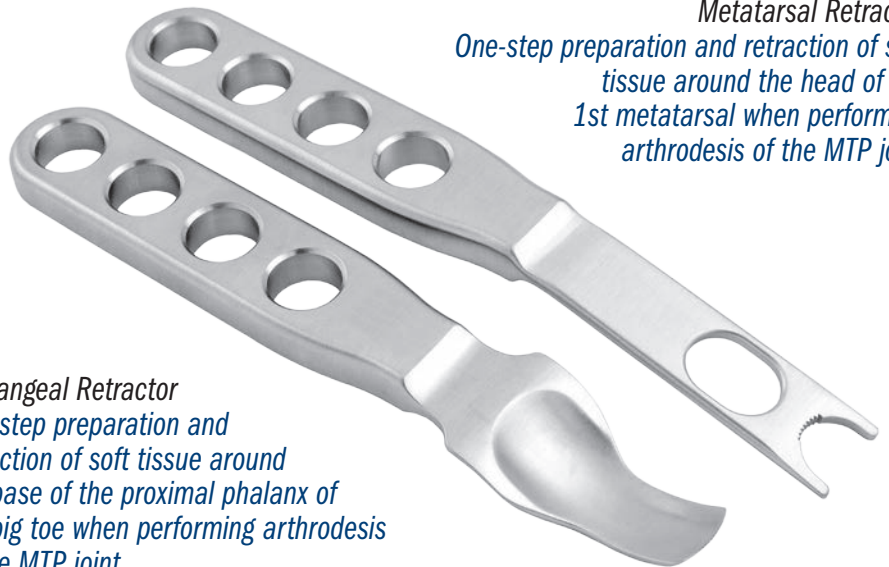
# Durst Arthrodesis Retractor Set

Designed by Heiko Durst, MD

*Designed for exposure and retraction when performing arthrodesis of the MTP joint*



**Metatarsal Retractor**  
*One-step preparation and retraction of soft tissue around the head of the 1st metatarsal when performing arthrodesis of the MTP joint*



**Phalangeal Retractor**  
*One-step preparation and retraction of soft tissue around the base of the proximal phalanx of the big toe when performing arthrodesis of the MTP joint*



<b>PRODUCT NO'S:</b>
1642-00 [Arthrodesis Retractor Set]
<b>Also available individually:</b>
1642-01 [Phalangeal Retractor] Overall Length: 6.625" (16,8 cm)
1642-02 [Metatarsal Retractor] Overall Length: 7" (17,8 cm)



ISO 9001:2008 • ISO 13485:2003

**FREE TRIAL ON MOST INSTRUMENTS**

Scan to  
Launch Our  
Website



**INNOMED** 



103 Estus Drive, Savannah, GA 31404  
[www.innomed.net](http://www.innomed.net) [info@innomed.net](mailto:info@innomed.net)

912.236.0000 Phone  
 912.236.7766 Fax

Innomed-Europe Tel. +41 41 740 67 74  
 Fax +41 41 740 67 71

**1.800.548.2362**